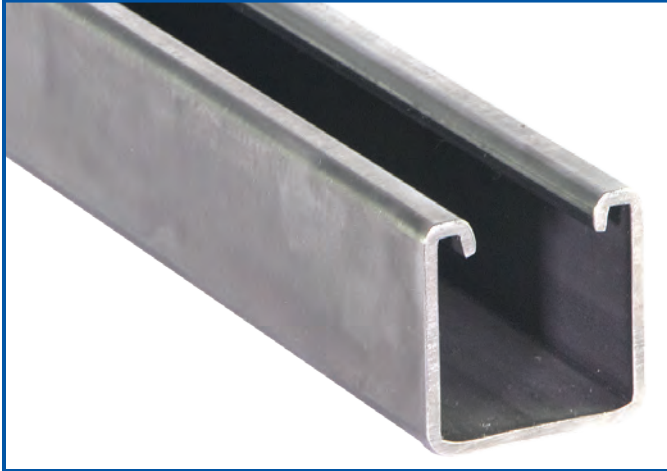


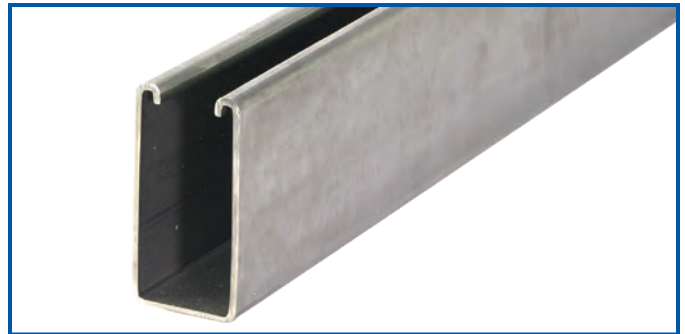
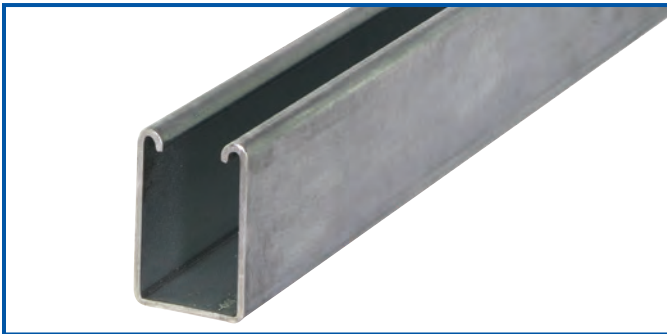


# Wesanco Cut Strut

## Domestic Rolled Channel In-Stock



- Made in USA
- Solid, Slotted, and Combination Strut
- Wide Range of Materials and Finishes
- In-Stock Shipping from Multiple Warehouses



**Cut Strut Size Range: 6", 12", 18", 24", 30", 36", 42", 48", 54", 60", 72", 80", 96", 10', & 20'**

**[www.ZSi-Foster.com](http://www.ZSi-Foster.com)**

**(800) 323-7053**

**ZSi-Foster**

Springfield, MO | Canton, MI | La Mirada, CA



# WESANCO<sup>®</sup> MATERIAL & FINISH SPECIFICATIONS

## General Information

Most Wesanco channels are produced in 10 and 20-foot lengths with a length tolerance of plus or minus 1/16. Wesanco W700 and W6500 are produced in 10 foot lengths only.

## Channels

### General

Wesanco channels are manufactured by the cold roll forming process which produces cross sections of uniform dimensions within tolerances established by the Metal Framing Manufacturer's Association, Metal Framing Standards Publication No. MFMA-1.

### Material

Steel used in the manufacture of Wesanco channels conforms to the ASTM specifications in this catalog.

### Design

Design is based on AISI "Specification for the Design of Cold-Formed Steel Structural Members." Maximum bending stress used in design is 25,000 pounds per square inch (PSI). This is based upon a virgin steel minimum yield stress of 33,000 PSI cold worked to an average yield stress of 42,000 PSI.

### Welding

Welds meet the performance requirements of section 4 of AISI "Specification for the design of Cold-Formed Steel Structural Members." All multiple sections of two or more single Wesanco channels are resistance spot-welded approximately 2" to 3" on center.

## Finishes

### Electroplated Zinc or Electro-Galvanized (EG)

This coating is standard for most ZSi-Foster products. Electro-Galvanized products meet ASTM B633 SC1 or SC3, Type III. Electroplating deposits zinc on the surface of the steel by electrolysis from a bath of zinc salts. The thickness of zinc applied in this method is between 0.2 mils to 0.5 mils [5.1 µm to 12.7 µm].

### Mill-Galvanized (Pre-Galvanized) (PG)

ASTM A653 G-90 Pre-galvanized zinc is produced by continuously rolling steel coils or sheets through molten zinc at the mills. The coils are slit to size and fabricated by forming, shearing or punching to produce the finished product. During fabrication cut edges are not generally zinc coated; however, the zinc near the uncoated metal becomes a sacrificial anode to protect the bare areas.

### Paint-Green Powder Coating (GR)

A dark green low gloss powder coating is applied and thoroughly baked after steel has been cleaned and phosphatized.

### Hot Dip Galvanized After Fabrication (HG)

Wesanco channel and fittings which are hot dip galvanized after fabrication conform to one of the following specifications. ASTM A 123, ASTM A153 or ASTM A386.

### Silva-Guard (SG)

ZSi-Foster Silva-Guard coating is a multi-step process that meets the 1000 hour salt spray test per ASTM B117 and DIN 50021. **Silva-Guard coating is WEEE, ELV and RoHS compliant.** SG Finish is approved for outdoor as well as indoor applications. It is a chrome free duplex coating system that combines an inorganic zinc-rich basecoat with an aluminum-rich organic topcoat.

### Special Coatings

Other commercially available finishes can be supplied per specification when required to protect applications.

Channel Specifications			
Material	Current ASTM Designation	Previous ASTM Designation	ASTM Description
Hot Rolled: Channel	A 1011SS GR33	A 570 GR33	Hot rolled carbon steel sheet and strip, structural quality.
Cold Rolled: Channel	A 1008SS GR33	A 611	Cold rolled carbon sheet steel.
Pregalvanized: Channel	A 653 SS GR33	A 653 GR33 G90	Steel sheet zinc-coated by hot dip process at mill, structural quality.
Stainless Steel: Channel	A 240 TYPE 304	A 240 TYPE 304	Heat resisting chromium and chromium-nickel stainless steel plate, sheet, strip for pressure vessel.
	A 240 TYPE 316	A 240 TYPE 316	
Aluminum: Channel	B 221 TYPE 6063 T6	B 221 TYPE 6063 TS	Aluminum alloy extruded bar, rod, wire, shape and tube.

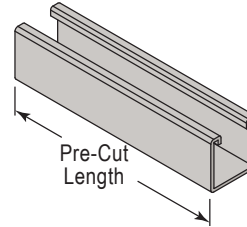
Refer to Engineering Catalog for Beam & Column Loading Data of Solid, Back-to-Back, and Punched Channels

# W200 Pre-Cut Channel



12 Gauge - 1<sup>5</sup>/<sub>8</sub>" x 1<sup>5</sup>/<sub>8</sub>" (41mm x 41mm)

## W200: 1<sup>5</sup>/<sub>8</sub>" x 1<sup>5</sup>/<sub>8</sub>" (41mm x 41mm) - Solid Channel - Pre-Cut Lengths



W200 - 1<sup>5</sup>/<sub>8</sub>" x 1<sup>5</sup>/<sub>8</sub>" - 12 Gauge - Solid Channel

Pre-Cut Length	Steel - PG	ST304	ST316
6" (15.2cm)	W200PG6IN	W200ST3046IN	W200ST3166IN
12" (0.31m)	W200PG12IN	W200ST30412IN	W200ST31612IN
18" (0.45m)	W200PG18IN	W200ST30418IN	W200ST31618IN
24" (0.61m)	W200PG24IN	W200ST30424IN	W200ST31624IN
30" (0.76m)	W200PG30IN	W200ST30430IN	W200ST31630IN
36" (0.91m)	W200PG36IN	W200ST30436IN	W200ST31636IN
42" (1.07m)	W200PG42IN	W200ST30442IN	W200ST31642IN
48" (1.22m)	W200PG48IN	W200ST30448IN	W200ST31648IN
54" (1.37m)	W200PG54IN	W200ST30454IN	W200ST31654IN
60" (1.52m)	W200PG60IN	W200ST30460IN	W200ST31660IN
72" (1.83m)	W200PG72IN	W200ST30472IN	W200ST31672IN
80" (2.03m)	W200PG80IN	W200ST30480IN	W200ST31680IN
96" (2.44m)	W200PG96IN	W200ST30496IN	W200ST31696IN
10' (3.05m)	W200PG10	W200ST30410	W200ST31610
20' (6.10m)	W200PG20	W200ST30420	W200ST31620

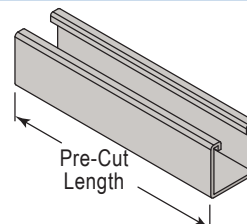
Note: Minimum order quantity is 100 pieces for any size under 10'.

## W200SS: 1<sup>5</sup>/<sub>8</sub>" x 1<sup>5</sup>/<sub>8</sub>" (41mm x 41mm) - Channel with Short Slots - Pre-Cut Lengths



### Channel With Short Slots

9/16" x 1-1/8" (14mm x 29mm) slots are punched on 2" (51mm) centers.



W200SS - 1<sup>5</sup>/<sub>8</sub>" x 1<sup>5</sup>/<sub>8</sub>" - 12 Gauge - Channel with Short Slots

Pre-Cut Length	Steel - PG	ST304	ST316
6" (15.2cm)	W200SSPG6IN	W200SSST3046IN	W200SSST3166IN
12" (0.31m)	W200SSPG12IN	W200SSST30412IN	W200SSST31612IN
18" (0.45m)	W200SSPG18IN	W200SSST30418IN	W200SSST31618IN
24" (0.61m)	W200SSPG24IN	W200SSST30424IN	W200SSST31624IN
30" (0.76m)	W200SSPG30IN	W200SSST30430IN	W200SSST31630IN
36" (0.91m)	W200SSPG36IN	W200SSST30436IN	W200SSST31636IN
42" (1.07m)	W200SSPG42IN	W200SSST30442IN	W200SSST31642IN
48" (1.22m)	W200SSPG48IN	W200SSST30448IN	W200SSST31648IN
54" (1.37m)	W200SSPG54IN	W200SSST30454IN	W200SSST31654IN
60" (1.52m)	W200SSPG60IN	W200SSST30460IN	W200SSST31660IN
72" (1.83m)	W200SSPG72IN	W200SSST30472IN	W200SSST31672IN
80" (2.03m)	W200SSPG80IN	W200SSST30480IN	W200SSST31680IN
96" (2.44m)	W200SSPG96IN	W200SSST30496IN	W200SSST31696IN
10' (3.05m)	W200SSPG10	W200SSST30410	W200SSST31610
20' (6.10m)	W200SSPG20	W200SSST30420	W200SSST31620

Note: Minimum order quantity is 100 pieces for any size under 10'.

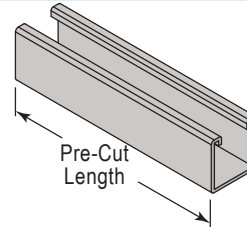
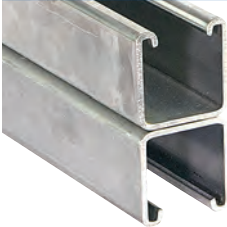
Refer to Engineering Catalog for Beam & Column Loading Data of Solid, Back-to-Back, and Punched Channels



# W201 & W202 Pre-Cut Channel

12 Gauge - 1<sup>5</sup>/<sub>8</sub>" x 3<sup>1</sup>/<sub>4</sub>" (41mm x 83mm)

## W201: 1<sup>5</sup>/<sub>8</sub>" x 3<sup>1</sup>/<sub>4</sub>" (41mm x 83mm) - Solid Back-to-Back Channel - Pre-Cut Lengths

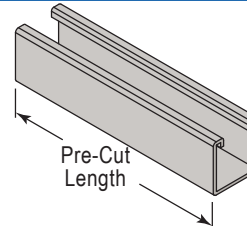
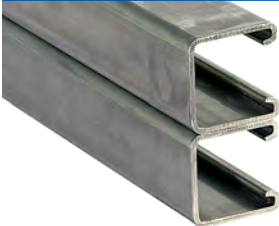


W201 - 1<sup>5</sup>/<sub>8</sub>" x 3<sup>1</sup>/<sub>4</sub>" - 12 Gauge Solid Back-to-Back Channel

Pre-Cut Length	Steel - PG	ST304	ST316
6" (15.2cm)	W201PG6IN	W201ST3046IN	W201ST3166IN
12" (0.31m)	W201PG12IN	W201ST30412IN	W201ST31612IN
18" (0.45m)	W201PG18IN	W201ST30418IN	W201ST31618IN
24" (0.61m)	W201PG24IN	W201ST30424IN	W201ST31624IN
30" (0.76m)	W201PG30IN	W201ST30430IN	W201ST31630IN
36" (0.91m)	W201PG36IN	W201ST30436IN	W201ST31636IN
42" (1.07m)	W201PG42IN	W201ST30442IN	W201ST31642IN
48" (1.22m)	W201PG48IN	W201ST30448IN	W201ST31648IN
54" (1.37m)	W201PG54IN	W201ST30454IN	W201ST31654IN
60" (1.52m)	W201PG60IN	W201ST30460IN	W201ST31660IN
72" (1.83m)	W201PG72IN	W201ST30472IN	W201ST31672IN
80" (2.03m)	W201PG80IN	W201ST30480IN	W201ST31680IN
96" (2.44m)	W201PG96IN	W201ST30496IN	W201ST31696IN
10' (3.05m)	W201PG10	W201ST30410	W201ST31610
20' (6.10m)	W201PG20	W201ST30420	W201ST31620

Note: Minimum order quantity is 100 pieces for any size under 10'.

## W202: 1<sup>5</sup>/<sub>8</sub>" x 3<sup>1</sup>/<sub>4</sub>" (41mm x 83mm) - Solid Side-to-Side Channel - Pre-Cut Lengths



W202 - 1<sup>5</sup>/<sub>8</sub>" x 3<sup>1</sup>/<sub>4</sub>" - 12 Gauge Solid Side-to-Side Channel

Pre-Cut Length	Steel - PG	ST304	ST316
6" (15.2cm)	W202PG6IN	W202ST3046IN	W202ST3166IN
12" (0.31m)	W202PG12IN	W202ST30412IN	W202ST31612IN
18" (0.45m)	W202PG18IN	W202ST30418IN	W202ST31618IN
24" (0.61m)	W202PG24IN	W202ST30424IN	W202ST31624IN
30" (0.76m)	W202PG30IN	W202ST30430IN	W202ST31630IN
36" (0.91m)	W202PG36IN	W202ST30436IN	W202ST31636IN
42" (1.07m)	W202PG42IN	W202ST30442IN	W202ST31642IN
48" (1.22m)	W202PG48IN	W202ST30448IN	W202ST31648IN
54" (1.37m)	W202PG54IN	W202ST30454IN	W202ST31654IN
60" (1.52m)	W202PG60IN	W202ST30460IN	W202ST31660IN
72" (1.83m)	W202PG72IN	W202ST30472IN	W202ST31672IN
80" (2.03m)	W202PG80IN	W202ST30480IN	W202ST31680IN
96" (2.44m)	W202PG96IN	W202ST30496IN	W202ST31696IN
10' (3.05m)	W202PG10	W202ST30410	W202ST31610
20' (6.10m)	W202PG20	W202ST30420	W202ST31620

Note: Minimum order quantity is 100 pieces for any size under 10'.

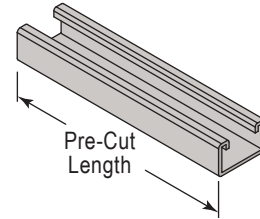
Refer to Engineering Catalog for Beam & Column Loading Data of Solid, Back-to-Back, and Punched Channels

# W800 Pre-Cut Channel



1<sup>5</sup>/<sub>8</sub>" x 1" (41mm x 25mm) - 12 Gauge

## W800: 1<sup>5</sup>/<sub>8</sub>" x 1" (41mm x 25mm) - Solid Channel - Pre-Cut Lengths



W800 - 1 <sup>5</sup> / <sub>8</sub> " x 1" - 12 Gauge - Solid Channel			
Pre-Cut Length	Steel - PG	ST304	ST316
6" (15.2cm)	W800PG6IN	W800ST3046IN	W800ST3166IN
12" (0.31m)	W800PG12IN	W800ST30412IN	W800ST31612IN
18" (0.45m)	W800PG18IN	W800ST30418IN	W800ST31618IN
24" (0.61m)	W800PG24IN	W800ST30424IN	W800ST31624IN
30" (0.76m)	W800PG30IN	W800ST30430IN	W800ST31630IN
36" (0.91m)	W800PG36IN	W800ST30436IN	W800ST31636IN
42" (1.07m)	W800PG42IN	W800ST30442IN	W800ST31642IN
48" (1.22m)	W800PG48IN	W800ST30448IN	W800ST31648IN
54" (1.37m)	W800PG54IN	W800ST30454IN	W800ST31654IN
60" (1.52m)	W800PG60IN	W800ST30460IN	W800ST31660IN
72" (1.83m)	W800PG72IN	W800ST30472IN	W800ST31672IN
80" (2.03m)	W800PG80IN	W800ST30480IN	W800ST31680IN
96" (2.44m)	W800PG96IN	W800ST30496IN	W800ST31696IN
10' (3.05m)	W800PG10	W800ST30410	W800ST31610
20' (6.10m)	W800PG20	W800ST30420	W800ST31620

Note: Minimum order quantity is 100 pieces for any size under 10'.

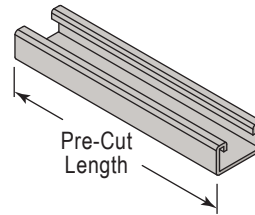
Refer to Engineering Catalog for Beam & Column Loading Data of Solid, Back-to-Back, and Punched Channels



# W900 Pre-Cut Channel

1<sup>5</sup>/<sub>8</sub>" x 7<sup>7</sup>/<sub>8</sub>" (41mm x 23mm) - 12 Gauge

## W900: 1<sup>5</sup>/<sub>8</sub>" x 7<sup>7</sup>/<sub>8</sub>" (41mm x 23mm) - Solid Channel - Pre-Cut Lengths



W900 - 1 <sup>5</sup> / <sub>8</sub> " x 7 <sup>7</sup> / <sub>8</sub> " - 12 Gauge - Solid Channel			
Pre-Cut Length	Steel - PG	ST304	ST316
6" (15.2cm)	W900PG6IN	W900ST3046IN	W900ST3166IN
12" (0.31m)	W900PG12IN	W900ST30412IN	W900ST31612IN
18" (0.45m)	W900PG18IN	W900ST30418IN	W900ST31618IN
24" (0.61m)	W900PG24IN	W900ST30424IN	W900ST31624IN
30" (0.76m)	W900PG30IN	W900ST30430IN	W900ST31630IN
36" (0.91m)	W900PG36IN	W900ST30436IN	W900ST31636IN
42" (1.07m)	W900PG42IN	W900ST30442IN	W900ST31642IN
48" (1.22m)	W900PG48IN	W900ST30448IN	W900ST31648IN
54" (1.37m)	W900PG54IN	W900ST30454IN	W900ST31654IN
60" (1.52m)	W900PG60IN	W900ST30460IN	W900ST31660IN
72" (1.83m)	W900PG72IN	W900ST30472IN	W900ST31672IN
80" (2.03m)	W900PG80IN	W900ST30480IN	W900ST31680IN
96" (2.44m)	W900PG96IN	W900ST30496IN	W900ST31696IN
10' (3.05m)	W900PG10	W900ST30410	W900ST31610
20' (6.10m)	W900PG20	W900ST30420	W900ST31620

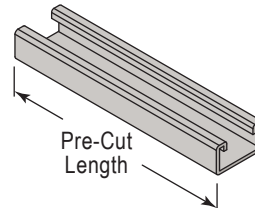
Note: Minimum order quantity is 100 pieces for any size under 10'.

## W900SS: 1<sup>5</sup>/<sub>8</sub>" x 7<sup>7</sup>/<sub>8</sub>" (41mm x 23mm) - Channel with Short Slots - Pre-Cut Lengths



### Channel With Short Slots

9/16" x 1-1/8" (14mm x 29mm) slots are punched on 2" (51mm) centers.



W900SS - 1 <sup>5</sup> / <sub>8</sub> " x 7 <sup>7</sup> / <sub>8</sub> " - 12 Gauge - Channel with Short Slots			
Pre-Cut Length	Steel - PG	ST304	ST316
6" (15.2cm)	W900SSPG6IN	W900SSST3046IN	W900SSST3166IN
12" (0.31m)	W900SSPG12IN	W900SSST30412IN	W900SSST31612IN
18" (0.45m)	W900SSPG18IN	W900SSST30418IN	W900SSST31618IN
24" (0.61m)	W900SSPG24IN	W900SSST30424IN	W900SSST31624IN
30" (0.76m)	W900SSPG30IN	W900SSST30430IN	W900SSST31630IN
36" (0.91m)	W900SSPG36IN	W900SSST30436IN	W900SSST31636IN
42" (1.07m)	W900SSPG42IN	W900SSST30442IN	W900SSST31642IN
48" (1.22m)	W900SSPG48IN	W900SSST30448IN	W900SSST31648IN
54" (1.37m)	W900SSPG54IN	W900SSST30454IN	W900SSST31654IN
60" (1.52m)	W900SSPG60IN	W900SSST30460IN	W900SSST31660IN
72" (1.83m)	W900SSPG72IN	W900SSST30472IN	W900SSST31672IN
80" (2.03m)	W900SSPG80IN	W900SSST30480IN	W900SSST31680IN
96" (2.44m)	W900SSPG96IN	W900SSST30496IN	W900SSST31696IN
10' (3.05m)	W900SSPG10	W900SSST30410	W900SSST31610
20' (6.10m)	W900SSPG20	W900SSST30420	W900SSST31620

Note: Minimum order quantity is 100 pieces for any size under 10'.

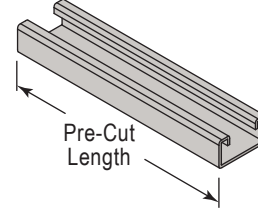
Refer to Engineering Catalog for Beam & Column Loading Data of Solid, Back-to-Back, and Punched Channels

# W500 Pre-Cut Channel



1<sup>5</sup>/<sub>8</sub>" x 1<sup>3</sup>/<sub>16</sub>" (41mm x 21mm) - 14 Gauge

## W500: 1<sup>5</sup>/<sub>8</sub>" x 1<sup>3</sup>/<sub>16</sub>" (41mm x 21mm) - Solid Channel - Pre-Cut Lengths



W500 - 1 <sup>5</sup> / <sub>8</sub> " x 1 <sup>3</sup> / <sub>16</sub> " - 14 Gauge - Solid Channel			
Pre-Cut Length	Steel - PG	ST304	ST316
6" (15.2cm)	W500PG6IN	W500ST3046IN	W500ST3166IN
12" (0.31m)	W500PG12IN	W500ST30412IN	W500ST31612IN
18" (0.45m)	W500PG18IN	W500ST30418IN	W500ST31618IN
24" (0.61m)	W500PG24IN	W500ST30424IN	W500ST31624IN
30" (0.76m)	W500PG30IN	W500ST30430IN	W500ST31630IN
36" (0.91m)	W500PG36IN	W500ST30436IN	W500ST31636IN
42" (1.07m)	W500PG42IN	W500ST30442IN	W500ST31642IN
48" (1.22m)	W500PG48IN	W500ST30448IN	W500ST31648IN
54" (1.37m)	W500PG54IN	W500ST30454IN	W500ST31654IN
60" (1.52m)	W500PG60IN	W500ST30460IN	W500ST31660IN
72" (1.83m)	W500PG72IN	W500ST30472IN	W500ST31672IN
80" (2.03m)	W500PG80IN	W500ST30480IN	W500ST31680IN
96" (2.44m)	W500PG96IN	W500ST30496IN	W500ST31696IN
10' (3.05m)	W500PG10	W500ST30410	W500ST31610
20' (6.10m)	W500PG20	W500ST30420	W500ST31620

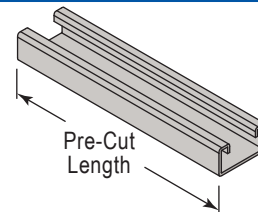
Note: Minimum order quantity is 100 pieces for any size under 10'.

## W500SS: 1<sup>5</sup>/<sub>8</sub>" x 1<sup>3</sup>/<sub>16</sub>" (41mm x 21mm) - Channel with Short Slots - Pre-Cut Lengths



### Channel With Short Slots

<sup>9</sup>/<sub>16</sub>" x 1-<sup>1</sup>/<sub>8</sub>" (14mm x 29mm) slots  
are punched on 2" (51mm) centers.



W500SS - 1 <sup>5</sup> / <sub>8</sub> " x 1 <sup>3</sup> / <sub>16</sub> " - 14 Gauge - Channel with Short Slots			
Pre-Cut Length	Steel - PG	ST304	ST316
6" (15.2cm)	W500SSPG6IN	W500SSST3046IN	W500SSST3166IN
12" (0.31m)	W500SSPG12IN	W500SSST30412IN	W500SSST31612IN
18" (0.45m)	W500SSPG18IN	W500SSST30418IN	W500SSST31618IN
24" (0.61m)	W500SSPG24IN	W500SSST30424IN	W500SSST31624IN
30" (0.76m)	W500SSPG30IN	W500SSST30430IN	W500SSST31630IN
36" (0.91m)	W500SSPG36IN	W500SSST30436IN	W500SSST31636IN
42" (1.07m)	W500SSPG42IN	W500SSST30442IN	W500SSST31642IN
48" (1.22m)	W500SSPG48IN	W500SSST30448IN	W500SSST31648IN
54" (1.37m)	W500SSPG54IN	W500SSST30454IN	W500SSST31654IN
60" (1.52m)	W500SSPG60IN	W500SSST30460IN	W500SSST31660IN
72" (1.83m)	W500SSPG72IN	W500SSST30472IN	W500SSST31672IN
80" (2.03m)	W500SSPG80IN	W500SSST30480IN	W500SSST31680IN
96" (2.44m)	W500SSPG96IN	W500SSST30496IN	W500SSST31696IN
10' (3.05m)	W500SSPG10	W500SSST30410	W500SSST31610
20' (6.10m)	W500SSPG20	W500SSST30420	W500SSST31620

Note: Minimum order quantity is 100 pieces for any size under 10'.

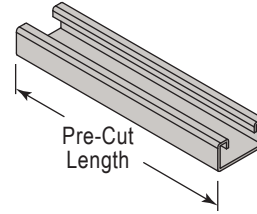
Refer to Engineering Catalog for Beam & Column Loading Data of Solid, Back-to-Back, and Punched Channels



# W501 Pre-Cut Channel

1<sup>5</sup>/<sub>8</sub>" x 1<sup>5</sup>/<sub>8</sub>" (41mm x 41mm) - 14 Gauge

## W501: 1<sup>5</sup>/<sub>8</sub>" x 1<sup>5</sup>/<sub>8</sub>" (41mm x 41mm) - Solid Channel - Pre-Cut Lengths



W501 - 1<sup>5</sup>/<sub>8</sub>" x 1<sup>5</sup>/<sub>8</sub>" - 14 Gauge - Solid Back-to-Back Channel

Pre-Cut Length	Steel - PG	ST304	ST316
6" (15.2cm)	W501PG6IN	W501ST3046IN	W501ST3166IN
12" (0.31m)	W501PG12IN	W501ST30412IN	W501ST31612IN
18" (0.45m)	W501PG18IN	W501ST30418IN	W501ST31618IN
24" (0.61m)	W501PG24IN	W501ST30424IN	W501ST31624IN
30" (0.76m)	W501PG30IN	W501ST30430IN	W501ST31630IN
36" (0.91m)	W501PG36IN	W501ST30436IN	W501ST31636IN
42" (1.07m)	W501PG42IN	W501ST30442IN	W501ST31642IN
48" (1.22m)	W501PG48IN	W501ST30448IN	W501ST31648IN
54" (1.37m)	W501PG54IN	W501ST30454IN	W501ST31654IN
60" (1.52m)	W501PG60IN	W501ST30460IN	W501ST31660IN
72" (1.83m)	W501PG72IN	W501ST30472IN	W501ST31672IN
80" (2.03m)	W501PG80IN	W501ST30480IN	W501ST31680IN
96" (2.44m)	W501PG96IN	W501ST30496IN	W501ST31696IN
10' (3.05m)	W501PG10	W501ST30410	W501ST31610
20' (6.10m)	W501PG20	W501ST30420	W501ST31620

Note: Minimum order quantity is 100 pieces for any size under 10'.

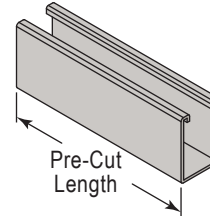
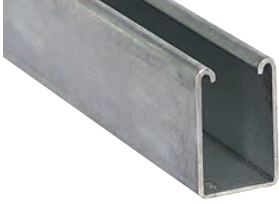


# W100 Pre-Cut Channel



12 Gauge - 1<sup>5</sup>/<sub>8</sub>" x 2<sup>7</sup>/<sub>16</sub>" (41mm x 62mm)

## W100: 1<sup>5</sup>/<sub>8</sub>" x 2<sup>7</sup>/<sub>16</sub>" (41mm x 62mm) - Solid Channel - Pre-Cut Lengths

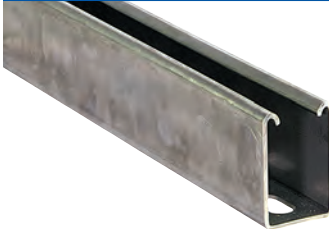


W100 - 1<sup>5</sup>/<sub>8</sub>" x 2<sup>7</sup>/<sub>16</sub>" - 12 Gauge Solid Channel

Pre-Cut Length	Steel - PG	ST304	ST316
6" (15.2cm)	W100PG6IN	W100ST3046IN	W100ST3166IN
12" (0.31m)	W100PG12IN	W100ST30412IN	W100ST31612IN
18" (0.45m)	W100PG18IN	W100ST30418IN	W100ST31618IN
24" (0.61m)	W100PG24IN	W100ST30424IN	W100ST31624IN
30" (0.76m)	W100PG30IN	W100ST30430IN	W100ST31630IN
36" (0.91m)	W100PG36IN	W100ST30436IN	W100ST31636IN
42" (1.07m)	W100PG42IN	W100ST30442IN	W100ST31642IN
48" (1.22m)	W100PG48IN	W100ST30448IN	W100ST31648IN
54" (1.37m)	W100PG54IN	W100ST30454IN	W100ST31654IN
60" (1.52m)	W100PG60IN	W100ST30460IN	W100ST31660IN
72" (1.83m)	W100PG72IN	W100ST30472IN	W100ST31672IN
80" (2.03m)	W100PG80IN	W100ST30480IN	W100ST31680IN
96" (2.44m)	W100PG96IN	W100ST30496IN	W100ST31696IN
10' (3.05m)	W100PG10	W100ST30410	W100ST31610
20' (6.10m)	W100PG20	W100ST30420	W100ST31620

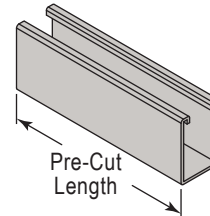
Note: Minimum order quantity is 100 pieces for any size under 10'.

## W100SS: 1<sup>5</sup>/<sub>8</sub>" x 2<sup>7</sup>/<sub>16</sub>" (41mm x 62mm) - Channel with Short Slots - Pre-Cut Lengths



### Channel With Short Slots

<sup>9</sup>/<sub>16</sub>" x 1-<sup>1</sup>/<sub>8</sub>" (14mm x 29mm) slots are punched on 2" (51mm) centers.



W100SS - 1<sup>5</sup>/<sub>8</sub>" x 2<sup>7</sup>/<sub>16</sub>" - 12 Gauge - Channel with Short Slots

Pre-Cut Length	Steel - PG	ST304	ST316
6" (15.2cm)	W100SSPG6IN	W100SSST3046IN	W100SSST3166IN
12" (0.31m)	W100SSPG12IN	W100SSST30412IN	W100SSST31612IN
18" (0.45m)	W100SSPG18IN	W100SSST30418IN	W100SSST31618IN
24" (0.61m)	W100SSPG24IN	W100SSST30424IN	W100SSST31624IN
30" (0.76m)	W100SSPG30IN	W100SSST30430IN	W100SSST31630IN
36" (0.91m)	W100SSPG36IN	W100SSST30436IN	W100SSST31636IN
42" (1.07m)	W100SSPG42IN	W100SSST30442IN	W100SSST31642IN
48" (1.22m)	W100SSPG48IN	W100SSST30448IN	W100SSST31648IN
54" (1.37m)	W100SSPG54IN	W100SSST30454IN	W100SSST31654IN
60" (1.52m)	W100SSPG60IN	W100SSST30460IN	W100SSST31660IN
72" (1.83m)	W100SSPG72IN	W100SSST30472IN	W100SSST31672IN
80" (2.03m)	W100SSPG80IN	W100SSST30480IN	W100SSST31680IN
96" (2.44m)	W100SSPG96IN	W100SSST30496IN	W100SSST31696IN
10' (3.05m)	W100SSPG10	W100SSST30410	W100SSST31610
20' (6.10m)	W100SSPG20	W100SSST30420	W100SSST31620

Note: Minimum order quantity is 100 pieces for any size under 10'.

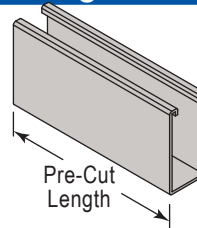
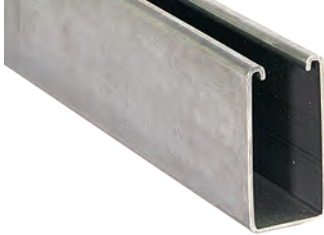
Refer to Engineering Catalog for Beam & Column Loading Data of Solid, Back-to-Back, and Punched Channels



# W150 Pre-Cut Channel

12 Gauge - 1<sup>5</sup>/<sub>8</sub>" x 3<sup>1</sup>/<sub>4</sub>" (41mm x 83mm)

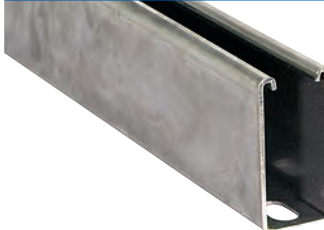
## W150: 1<sup>5</sup>/<sub>8</sub>" x 3<sup>1</sup>/<sub>4</sub>" (41mm x 83mm) - Solid Channel - Pre-Cut Lengths



W150 - 1 <sup>5</sup> / <sub>8</sub> " x 3 <sup>1</sup> / <sub>4</sub> " - 12 Gauge Solid Channel			
Pre-Cut Length	Steel - PG	ST304	ST316
6" (15.2cm)	W150PG6IN	W150ST3046IN	W150ST3166IN
12" (0.31m)	W150PG12IN	W150ST30412IN	W150ST31612IN
18" (0.45m)	W150PG18IN	W150ST30418IN	W150ST31618IN
24" (0.61m)	W150PG24IN	W150ST30424IN	W150ST31624IN
30" (0.76m)	W150PG30IN	W150ST30430IN	W150ST31630IN
36" (0.91m)	W150PG36IN	W150ST30436IN	W150ST31636IN
42" (1.07m)	W150PG42IN	W150ST30442IN	W150ST31642IN
48" (1.22m)	W150PG48IN	W150ST30448IN	W150ST31648IN
54" (1.37m)	W150PG54IN	W150ST30454IN	W150ST31654IN
60" (1.52m)	W150PG60IN	W150ST30460IN	W150ST31660IN
72" (1.83m)	W150PG72IN	W150ST30472IN	W150ST31672IN
80" (2.03m)	W150PG80IN	W150ST30480IN	W150ST31680IN
96" (2.44m)	W150PG96IN	W150ST30496IN	W150ST31696IN
10' (3.05m)	W150PG10	W150ST30410	W150ST31610
20' (6.10m)	W150PG20	W150ST30420	W150ST31620

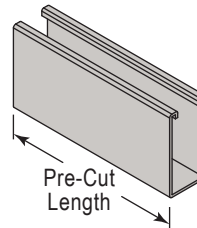
Note: Minimum order quantity is 100 pieces for any size under 10'.

## W150SS: 1<sup>5</sup>/<sub>8</sub>" x 3<sup>1</sup>/<sub>4</sub>" (41mm x 83mm) - Channel with Short Slots - Pre-Cut Lengths



### Channel With Short Slots

9/16" x 1-1/8" (14mm x 29mm) slots are punched on 2" (51mm) centers.

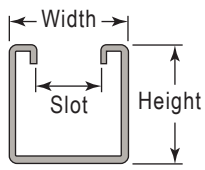


W150SS - 1 <sup>5</sup> / <sub>8</sub> " x 3 <sup>1</sup> / <sub>4</sub> " - 12 Gauge - Channel with Short Slots			
Pre-Cut Length	Steel - PG	ST304	ST316
6" (15.2cm)	W150SSPG6IN	W150SSST3046IN	W150SSST3166IN
12" (0.31m)	W150SSPG12IN	W150SSST30412IN	W150SSST31612IN
18" (0.45m)	W150SSPG18IN	W150SSST30418IN	W150SSST31618IN
24" (0.61m)	W150SSPG24IN	W150SSST30424IN	W150SSST31624IN
30" (0.76m)	W150SSPG30IN	W150SSST30430IN	W150SSST31630IN
36" (0.91m)	W150SSPG36IN	W150SSST30436IN	W150SSST31636IN
42" (1.07m)	W150SSPG42IN	W150SSST30442IN	W150SSST31642IN
48" (1.22m)	W150SSPG48IN	W150SSST30448IN	W150SSST31648IN
54" (1.37m)	W150SSPG54IN	W150SSST30454IN	W150SSST31654IN
60" (1.52m)	W150SSPG60IN	W150SSST30460IN	W150SSST31660IN
72" (1.83m)	W150SSPG72IN	W150SSST30472IN	W150SSST31672IN
80" (2.03m)	W150SSPG80IN	W150SSST30480IN	W150SSST31680IN
96" (2.44m)	W150SSPG96IN	W150SSST30496IN	W150SSST31696IN
10' (3.05m)	W150SSPG10	W150SSST30410	W150SSST31610
20' (6.10m)	W150SSPG20	W150SSST30420	W150SSST31620

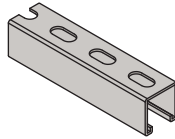
Note: Minimum order quantity is 100 pieces for any size under 10'.

Refer to Engineering Catalog for Beam & Column Loading Data of Solid, Back-to-Back, and Punched Channels

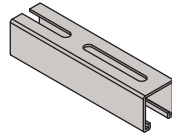
# Wesanco® Channel Selection Chart



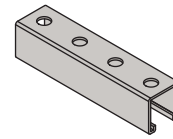
"SS" - Channel With Short Slots



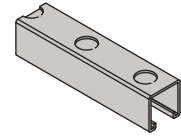
"SL" - Channel With Long Slots



"H" - Channel With Holes



"KO" - Channel With Knock-Outs



Channel	Channel Dimensions				Steel Gauge	Hole Patterns				Finish					Special Metals						
	Style	Width	Height	Slot Width		SS	SL	H	KO	PG	EG	HG	GR	PL	Gold	ST304	ST316	EA			
W100		1 5/8" (41mm)	2 7/16" (62mm)	7/8" (22mm)	12	◆	◆	◆	◆	■	-	■	■	■	■	■	■	-			
W101			4 7/8" (124mm)			◆	◆	◆	◆	■	-	■	■	■	■	■	■	■	■	-	
W150			3 1/4" (83mm)			◆	◆	◆	◆	■	-	■	■	■	■	■	■	■	■	-	
W151			6 1/2" (165mm)			◆	◆	◆	◆	■	-	■	■	■	■	■	■	■	■	-	
W200			1 5/8" (41mm)			◆	◆	◆	◆	■	-	■	■	■	■	■	■	■	■	■	
W201			3 1/4" (83mm)			◆	◆	◆	◆	■	-	■	■	■	■	■	■	■	■	■	
W210			1 5/8" (41mm)			◆	◆	◆	◆	■	-	■	■	■	■	■	■	■	■	-	
W211			3 1/4" (83mm)			◆	◆	◆	◆	■	-	■	■	■	■	■	■	■	■	-	
W300			1 3/8" (35mm)			◆	◆	◆	◆	■	-	■	■	■	■	■	■	■	■	-	
W301			2 3/4" (70mm)			◆	◆	◆	◆	■	-	■	■	■	■	■	■	■	■	-	
W400			1 3/4" (21mm)			◆	◆	◆	◆	■	-	■	■	■	■	■	■	■	■	-	
W401			1 5/8" (41mm)			◆	◆	◆	◆	■	-	■	■	■	■	■	■	■	■	-	
W500			1 3/4" (21mm)			◆	◆	◆	◆	■	-	■	■	■	■	■	■	■	■	■	
W501			1 5/8" (41mm)			◆	◆	◆	◆	■	-	■	■	■	■	■	■	■	■	■	
W600			1 3/16" (21mm)			1 3/16" (21mm)	7/16" (11mm)	19	-	-	-	-	-	■	■	■	■	■	■	-	-
W601						1 5/8" (41mm)			-	-	-	-	-	-	■	■	■	■	■	■	■
W700		1 3/32" (10mm)		-	-	-			-	-	-	■	■	■	■	■	■	■	-	-	
W701		1 3/16" (21mm)		-	-	-			-	-	-	■	■	■	■	■	■	■	-	-	
W800		1 5/8" (41mm)	1" (25mm)	7/8" (22mm)	12	◆	◆	◆	◆	■	-	■	■	■	■	■	■	-			
W801			2" (51mm)			◆	◆	◆	◆	■	-	■	■	■	■	■	■	■	-		
W900			7/8" (23mm)			◆	◆	◆	◆	■	-	■	■	■	■	■	■	■	-		
W901			1 3/4" (44mm)			◆	◆	◆	◆	■	-	■	■	■	■	■	■	■	-		

◆ Pierced Available

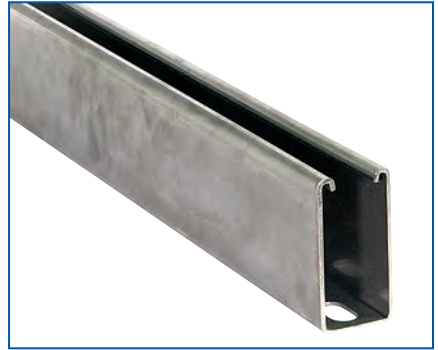
For finish and material specifications see our Engineering Catalog

PG - Pre-Galvanized • EG - Electro-Galvanized • HG - Hot Dip Galvanized • GR - Paint-Green Powder Coating • PL - Uncoated Steel  
 GOLD - Yellow Zinc Dichromate ST304 - Stainless Steel Type 304 • ST316 - Stainless Steel Type 316 • EA - Extruded Aluminum



# Wesanco Cut Strut

## Domestic Rolled Channel In-Stock



Call ZSi-Foster at (800) 323-7053  
or order now at [ZSi-Foster.com](http://ZSi-Foster.com)

**ZSi-Foster**

Springfield, MO | Canton, MI | La Mirada, CA