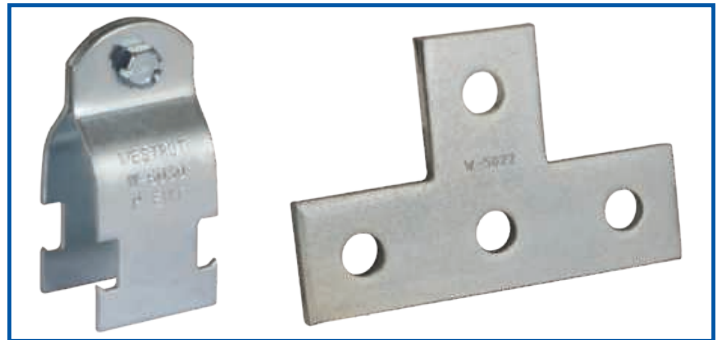
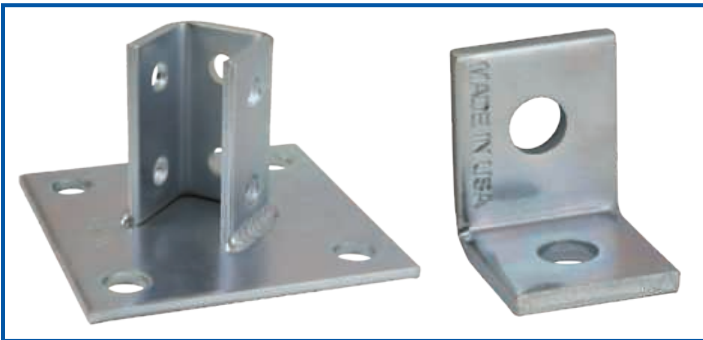




Stocked Stainless Steel Strut Texas & California



- Stocked in CA and TX for Quick Delivery
- Domestically Made in La Mirada, CA
- Short Lead Times
- Stainless Steel Type 304 and Type 316



Channel Part No.		Item Class	Std Qty.	Weight per Foot
ST304	ST316			
W100 – Channel - 12 Gauge, 1-5/8" x 2-7/16"				
W100ST30410	W100ST31610	AS	400	2.50
W100ST30420	W100ST31620	AS	800	2.50
W100SS – Channel with Short Slots- 12 Gauge, 1-5/8" x 2-7/16"				
W100SSST30410	W100SSST31610	AS	400	2.42
W100SSST30420	W100SSST31620	AS	800	2.42
W150 – Channel - 12 Gauge, 1-5/8" x 3-1/4"				
W150ST30410	W150ST31610	AS	300	3.10
W150ST30420	W150ST31620	AS	600	3.10
W150SS – Channel with Short Slots - 12 Gauge, 1-5/8" x 3-1/4"				
W150SSST30410	W150SSST31610	AS	300	3.00
W150SSST30420	W150SSST31620	AS	600	3.00
W200 – Channel - 12 Gauge, 1-5/8" x 1-5/8"				
W200ST30410	W200ST31610	AS	500	1.90
W200ST30420	W200ST31620	AS	1000	1.90
W200SS – Channel with Short Slots- 12 Gauge, 1-5/8" x 1-5/8"				
W200SSST30410	W200SSST31610	AS	500	1.85
W200SSST30420	W200SSST31620	AS	1000	1.85

Channel Part No.		Item Class	Std Qty.	Weight per Foot
ST304	ST316			
W201 – Channel Combination - 12 Gauge, 1-5/8" x 3-1/4"				
W201ST30410	W201ST31610	AS	250	3.80
W201ST30420	W201ST31620	AS	500	3.80
W201SS – Channel Combination with Short Slots- 12 Gauge, 1-5/8" x 3-1/4"				
W201SSST30410	W201SSST31610	AS	250	3.70
W201SSST30420	W201SSST31620	AS	500	3.70
W500 – Channel - 14 Gauge, 1-5/8" x 13/16"				
W500ST30410	W500ST31610	AS	500	1.00
W500ST30420	W500ST31620	AS	1000	1.00
W500SS – Channel with Short Slots - 14 Gauge, 1-5/8" x 13/16"				
W500SSST30410	W500SSST31610	AS	500	0.95
W500SSST30420	W500SSST31620	AS	1000	0.95
W900 – Channel - 12 Gauge, 1-5/8" x 7/8"				
W900ST30410	W900ST31610	AS	500	1.35
W900ST30420	W900ST31620	AS	500	1.35
W900SS – Channel with Short Slots - 12 Gauge, 1-5/8" x 7/8"				
W900SSST30410	W900SSST31610	AS	500	1.28
W900SSST30420	W900SSST31620	AS	500	1.28

Cush-A-Nator Part No.		Item Class	Size	Std Qty.	Weight Each
ST304	ST316				
Cush-A-Nator - Standard Temp, Tube Size					
CN04SS	CN04S6	Z1S	¼"	25	0.1
CN06SS	CN06S6	Z1S	⅜"	25	0.11
CN08SS	CN08S6	Z1S	½"	25	0.13
CN10SS	CN10S6	Z1S	⅝"	25	0.14
CN12SS	CN12S6	Z1S	¾"	25	0.14
CN14SS	CN14S6	Z1S	⅞"	25	0.15
CN16SS	CN16S6	Z1S	1"	25	0.17
CN18SS	CN18S6	Z1S	1-⅛"	25	0.18
CN20SS	CN20S6	Z1S	1-¼"	20	0.18
CN22SS	CN22S6	Z1S	1-⅜"	10	0.2
CN24SS	CN24S6	Z1S	1-½"	10	0.33
CN26SS	CN26S6	Z1S	1-⅝"	10	0.35
CN28SS	CN28S6	Z1S	1-¾"	10	0.37
CN30SS	CN30S6	Z1S	1-⅞"	10	0.39
CN32SS	CN32S6	Z1S	2"	20	0.41
CN34SS	CN34S6	Z1S	2-⅛"	20	0.46
CN36SS	CN36S6	Z1S	2-¼"	10	0.46
CN38SS	CN38S6	Z1S	2-⅜"	10	0.47
CN40SS	CN40S6	Z1S	2-½"	10	0.49
CN42SS	CN42S6	Z1S	2-⅝"	10	0.51
CN46SS	CN46S6	Z1S	2-⅞"	10	0.55
CN48SS	CN48S6	Z1S	3"	5	0.57
CN50SS	CN50S6	Z1S	3-⅛"	5	0.60
CN56SS	CN56S6	Z1S	3-½"	10	0.64
CN64SS	CN64S6	Z1S	4"	5	0.88
CN66SS	CN66S6	Z1S	4-⅛"	5	0.94
CN72SS	CN72S6	Z1S	4-½"	5	1.10
Cush-A-Nator - Standard Temp, Pipe Size					
CN14PSS	CN14PS6	Z1S	½"	25	0.15
CN17PSS	CN17PS6	Z1S	¾"	25	0.17
CN21PSS	CN21PS6	Z1S	1"	10	0.19
CN30PSS	CN30PS6	Z1S	1-½"	10	0.39
CN38PSS	CN38PS6	Z1S	2"	10	0.47
CN46PSS	CN46PS6	Z1S	2-½"	10	0.55
CN56PSS	CN56PS6	Z1S	3"	10	0.64
CN64PSS	CN64PS6	Z1S	3-½"	5	0.88
CN72PSS	CN72PS6	Z1S	4"	5	1.10

Post Base Part No.		Item Class	Size	Std Qty.	Weight Each
ST304	ST316				
W5810 – Rectangular Plate Eight-Hole Post Base Single Channel Tall Clevis					
W5810ST304	W5810ST316	D		10	2.86
W5810FLST304	W5810FLST316	D	Flush with Edge	10	2.86
W5812 – Rectangular Plate 6 Hole Post Base Double Channel Short Clevis					
W5812ST304	W5812ST316	D		10	3.00
W5814 – Ten-Hole Post Base Single Channel Tall Clevis					
W5814ST304	W5814ST316	D		10	3.72
W5814SQST304	W5814SQST316	D	Square	10	3.72
W5816 – Twelve-Hole Post Base Double Channel Tall Clevis					
W5816ST304	W5816ST316	D		10	4.00
W5816SQST304	W5816SQST316	D	Square	10	4.00

Cush-A-Nator Part No.		Item Class	Size	Std Qty.	Weight Each
ST304	ST316				
Cush-A-Nator - "Cool Blue" High Temp, Tube Size					
HT04SS	HT04S6	Z2S	¼"	25	0.11
HT06SS	HT06S6	Z2S	⅜"	25	0.121
HT08SS	HT08S6	Z2S	½"	25	0.143
HT10SS	HT10S6	Z2S	⅝"	25	0.154
HT12SS	HT12S6	Z2S	¾"	25	0.15
HT14SS	HT14S6	Z2S	⅞"	25	0.165
HT16SS	HT16S6	Z2S	1"	25	0.19
HT18SS	HT18S6	Z2S	1-⅛"	25	0.198
HT20SS	HT20S6	Z2S	1-¼"	20	0.20
HT22SS	HT22S6	Z2S	1-⅜"	10	0.22
HT24SS	HT24S6	Z2S	1-½"	10	0.36
HT26SS	HT26S6	Z2S	1-⅝"	10	0.385
HT28SS	HT28S6	Z2S	1-¾"	10	0.41
HT30SS	HT30S6	Z2S	1-⅞"	10	0.43
HT32SS	HT32S6	Z2S	2"	20	0.45
HT34SS	HT34S6	Z2S	2-⅛"	20	0.506
HT36SS	HT36S6	Z2S	2-¼"	10	0.51
HT38SS	HT38S6	Z2S	2-⅜"	10	0.52
HT40SS	HT40S6	Z2S	2-½"	10	0.54
HT42SS	HT42S6	Z2S	2-⅝"	10	0.56
HT46SS	HT46S6	Z2S	2-⅞"	10	0.61
HT48SS	HT48S6	Z2S	3"	5	0.63
HT50SS	HT50S6	Z2S	3-⅛"	5	0.66
HT56SS	HT56S6	Z2S	3-½"	10	0.70
HT64SS	HT64S6	Z2S	4"	5	0.97
HT66SS	HT66S6	Z2S	4-⅛"	5	1.03
HT72SS	HT72S6	Z2S	4-½"	5	1.21
Cush-A-Nator - "Cool Blue" High Temp, Pipe Size					
HT14PSS	HT14PS6	Z2S	½"	25	0.17
HT17PSS	HT17PS6	Z2S	¾"	25	0.19
HT21PSS	HT21PS6	Z2S	1"	10	0.21
HT30PSS	HT30PS6	Z2S	1-½"	10	0.43
HT38PSS	HT38PS6	Z2S	2"	10	0.52
HT46PSS	HT46PS6	Z2S	2-½"	10	0.61
HT56PSS	HT56PS6	Z2S	3"	10	0.70
HT64PSS	HT64PS6	Z2S	3-½"	5	0.97
HT72PSS	HT72PS6	Z2S	4"	5	1.21

Bracket Part No.		Item Class	Size	Std Qty.	Weight Each
ST304	ST316				
W5652 - W5656 – Channel Combination Bracket					
W5652ST304	W5652ST316	I	12"	BULK	5.25
W5653ST304	W5653ST316	I	18"	BULK	7.15
W5654ST304	W5654ST316	I	24"	BULK	9.15
W5655ST304	W5655ST316	I	30"	BULK	11.50
W5656ST304	W5656ST316	I	36"	BULK	13.50
W5661 - W5664 – Channel Bracket					
W5661ST304	W5661ST316	I	6"	BULK	1.53
W5662ST304	W5662ST316	I	12"	BULK	2.48
W5663ST304	W5663ST316	I	18"	BULK	3.42
W5664ST304	W5664ST316	I	24"	BULK	4.37

Fittings Part No.		Item Class	Size	Std Qty.	Weight Each
ST304	ST316				
W5002 - W5006 – Square Washer with Channel Guide					
W5002ST304	W5002ST316	D	5/16"	100	0.18
W5003ST304	W5003ST316	D	3/8"	100	0.18
W5004ST304	W5004ST316	D	1/2"	100	0.17
W5005ST304	W5005ST316	D	5/8"	100	0.16
W5006ST304	W5006ST316	D	3/4"	100	0.16
W5052 - W5056 – Flat Square Washer					
W5052ST304	W5052ST316	D	5/16"	100	0.18
W5053ST304	W5053ST316	D	3/8"	100	0.18
W5054ST304	W5054ST316	D	1/2"	100	0.17
W5055ST304	W5055ST316	D	5/8"	100	0.16
W5056ST304	W5056ST316	D	3/4"	100	0.16
W5007 – Two Hole Splice Plate					
W5007ST304	W5007ST316	D		50	0.38
W5008 – Three Hole Splice Plate					
W5008ST304	W5008ST316	D		50	0.58
W5009 – Four Hole Splice Plate					
W5009ST304	W5009ST316	D		50	0.78
W5010 – Five Hole Splice Plate					
W5010ST304	W5010ST316	D		50	0.94
W5011 – Two Hole Swivel Plate					
W5011ST304	W5011ST316	D		50	0.56
W5012 – Three Hole Swivel Plate					
W5012ST304	W5012ST316	D		50	0.75
W5013 – Two Hole Parallel Splice Plate					
W5013ST304	W5013ST316	D		50	0.38
W5021 – Flat Angle Plate					
W5021ST304	W5021ST316	D		50	0.66
W5022 – Tee Plate					
W5022ST304	W5022ST316	D		25	0.80
W5023 – Cross Plate					
W5023ST304	W5023ST316	D		15	0.95
W5024 – Four-Hole Corner Plate					
W5024ST304	W5024ST316	D		25	0.99
W5025 – Extended Flat Angle Plate					
W5025ST304	W5025ST316	D		25	0.80
W5026 – Four Hole Gusset Plate					
W5026ST304	W5026ST316	D		25	1.05
W5102 – Two-Hole Rack Connector					
W5102ST304	W5102ST316	D		50	0.38
W5103 – Two-Hole End Connector					
W5103ST304	W5103ST316	D		50	0.38
W5104 – Two-Hole Angle (Indented)					
W5104ST304	W5104ST316	D		50	0.40
W5109 – Four-Hole Rack Splice Connector					
W5109ST304	W5109ST316	D		25	1.05
W5111 – Three Hole Adjustment Angle (slot: 9/16" x 1-1/2")					
W5111ST304	W5111ST316	D		50	0.66
W5112 – Three-Hole Rack Connector					
W5112ST304	W5112ST316	D		50	0.58
W5113 – Three Hole End Connector					
W5113ST304	W5113ST316	D		50	0.58

Fittings Part No.		Item Class	Size	Std Qty.	Weight Each
ST304	ST316				
W5115 – Three Hole Rack Corner Angle					
W5115ST304	W5115ST316	D		50	0.58
W5117 – Five-Hole Corner Splice Connector					
W5117ST304	W5117ST316	D		15	1.50
W5123 – Four-Hole Rack Corner Angle					
W5123ST304	W5123ST316	D		25	0.78
W5124 – Universal Corner Angle					
W5124ST304	W5124ST316	D		15	1.46
W5125 – Four-Hole Corner Connector					
W5125ST304	W5125ST316	D		25	0.78
W5210 - W5212 – Zee Supports					
W5210ST304	W5210ST316	D		25	0.70
W5212ST304	W5212ST316	D		50	0.55
W5307 – Slotted "U" Supports for W200, W210					
W5307ST304	W5307ST316	D		25	1.05
W5312 – U Supports for W200, W210					
W5312ST304	W5312ST316	D		15	0.88
W5316 – U Supports for W150, W201					
W5316ST304	W5316ST316	D		25	1.28
W5317 – U Support (Double Channel)					
W5317ST304	W5317ST316	D		25	1.00
W5342 – Two Hole Splice					
W5342ST304	W5342ST316	D		25	0.78
W5343 – Three Hole Splice					
W5343ST304	W5343ST316	D		15	1.30
W5344 – Two Hole Splice					
W5344ST304	W5344ST316	D		15	1.25
W5345 – Four Hole Splice					
W5345ST304	W5345ST316	D		8	2.65
W5346 – Three Hole Splice					
W5346ST304	W5346ST316	D		8	1.98
W5415 – 45 Deg. Four-Hole Closed Angle					
W5415ST304	W5415ST316	D		15	1.00
W5425 – 45 Deg. Two Hole Open Angle					
W5425ST304	W5425ST316	D		50	0.50
W5445 – 45 Deg. Four Hole Open Angle					
W5445ST304	W5445ST316	D		25	0.78
W5465 – 45 Deg. Two Hole Closed Angle					
W5465ST304	W5465ST316	D		25	0.58
W5510 – Three-Hole Right Corner Angle					
W5510ST304	W5510ST316	D		25	0.56
W5511 – Three-Hole Left Corner Angle					
W5511ST304	W5511ST316	D		25	0.56
W5512 – Four-Hole 90 Deg. Corner Angle					
W5512ST304	W5512ST316	D		15	0.81
W5513 – Five-Hole Two Side Angle Connector					
W5513ST304	W5513ST316	D		15	0.93
W5515 – Eight-Hole 90 Deg. Corner Angle Connector					
W5515ST304	W5515ST316	D		15	1.37
W5517 – Nine-Hole Three Side Angle Connector					
W5517ST304	W5517ST316	D		25	1.75



Stocked Stainless Steel Products Texas & California

Cush-A-Clamp ST304 Part No.	Item Class	Tube	Nom. Pipe	Copper Pipe	Std Qty.	Weight Each
Cush-A-Clamp SS 304						
004NS008	Z3S	1/4"			25	0.1
006NS010	Z3S	3/8"		1/4"	25	0.11
008NS012	Z3S	1/2"		3/8"	25	0.13
009NS012	Z3S		1/4"		25	0.13
010NS014	Z3S	5/8"		1/2"	25	0.14
011NS014	Z3S		3/8"		25	0.14
012NS016	Z3S	3/4"		5/8"	25	0.14
014NS018	Z3S		1/2"		25	0.15
016NS020	Z3S	1"			25	0.17
017NS022	Z3S		3/4"		25	0.17
018NS022	Z3S	1-1/8"		1"	25	0.18
020NS024	Z3S	1-1/4"			20	0.18
021NS026	Z3S		1"		10	0.19
022NS026	Z3S	1-3/8"		1-1/4"	10	0.2
024NS028	Z3S	1-1/2"			10	0.33
026NS030	Z3S	1-5/8"		1-1/2"	10	0.35
027NS032	Z3S		1-1/4"		10	0.35
028NS032	Z3S	1-3/4"			10	0.37
030NS034	Z3S	1-7/8"	1-1/2"		10	0.39
032NS036	Z3S	2"			20	0.41
034NS040	Z3S	2-1/8"		2"	20	0.46
038NS042	Z3S	2-1/4"			10	0.46
038NS044	Z3S	2-3/8"	2"		10	0.47
040NS046	Z3S	2-1/2"			10	0.49
042NS048	Z3S	2-5/8"		2-1/2"	10	0.51
046NS052	Z3S	2-7/8"	2-1/2"		10	0.55
050NS054	Z3S	3"			5	0.57
050NS056	Z3S	3-1/8"		3"	5	0.6
053NS060	Z3S	3-5/16"			5	0.62
056NS062	Z3S	3-1/2"	3"		10	0.64
058NS064	Z3S	3-5/8"		3-1/2"	5	0.7
064NS072	Z3S	4"	3-1/2"		5	0.88
066NS074	Z3S	4-1/8"		4"	5	0.94
069NS076	Z3S	4-5/16"			5	1
072NS080	Z3S	4-1/2"	4"		5	1.1
082NS090	Z3S	5-1/8"		5"	5	1.25
089NS096	Z3S		5"		5	1.3
096NS106	Z3S	6"			5	1.3
098NS106	Z3S	6-1/8"		6"	5	1.3
106NS114	Z3S		6"		5	1.4

Clamps Part No.		Item Class	Size	Std Qty.	Weight Each
ST304	ST316				
W6126 - W6178 – Rigid Steel Conduit Series (Iron Pipe)					
W6126AST304	W6126AST316	BS	1/2"	100	0.11
W6128AST304	W6128AST316	BS	3/4"	100	0.15
W6130AST304	W6130AST316	BS	1"	100	0.17
W6132AST304	W6132AST316	BS	1-1/4"	50	0.19
W6134AST304	W6134AST316	BS	1-1/2"	50	0.29
W6138AST304	W6138AST316	BS	2"	50	0.34
W6142AST304	W6142AST316	BS	2-1/2"	50	0.40
W6146AST304	W6146AST316	BS	3"	50	0.47
W6150AST304	W6150AST316	BS	3-1/2"	25	0.62
W6154AST304	W6154AST316	BS	4"	25	0.67
W6162AST304	W6162AST316	BS	5"	25	0.80
W6170AST304	W6170AST316	BS	6"	25	1.02
W6174AST304	W6174AST316	BS	8"	25	1.16
W6176AST304	W6176AST316	BS	10"	25	1.32
W6178AST304	W6178AST316	BS	12"	25	1.50

Channel Nut ST316 Part No.	Item Class	Size	Std Qty.	Weight Each
Channel Nut With Short Spring, ST 316				
W5-4ST316	C	1/4-20	100	0.75
W5-6ST316	C	3/8-16	100	0.09
W5-8ST316	C	1/2-13	100	0.08
Channel Nut With Standard Spring, ST 316				
W2-4ST316	C	1/4-20	100	0.08
W2-6ST316	C	3/8-16	100	0.10
W2-8ST316	C	1/2-13	100	0.12
Channel Nut Without Spring, ST 316				
W2-4WSST316	C	1/4-20	100	0.07
W2-6WSST316	C	3/8-16	100	0.09
W2-8WSST316	C	1/2-13	100	0.11

Beam Clamp Part No.		Item Class	Size	Std Qty.	Weight Each
ST304	ST316				
W5708 – U Bolt Beam Clamp (Long) (Used In Pairs)					
W5708ST304	W5708ST316	J		25	0.92
W5709 – U-Bolt Beam Clamp (Short) (Used In Pairs)					
W5709ST304	W5709ST316	J		25	0.82
W5718 - W5719 – Malleable Wedge "C" Type Clamps, ST316					
-	W5718ST316	J	3/8" Rod	20	0.83
-	W5719ST316	J	1/2" Rod	20	0.83

Call ZSi-Foster at (714) 739-4989 or order now at ZSi-Foster.com

ZSi-Foster.com | Springfield, MO | Canton, MI | La Mirada, CA