

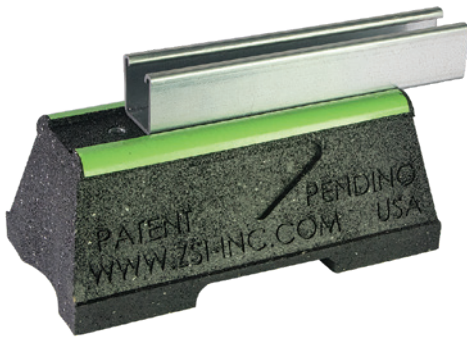


# Next Generation Cush-a-Block® Rooftop Support System

HVAC | Pipe & Conduit | Solar Racking | Rooftop Walkways

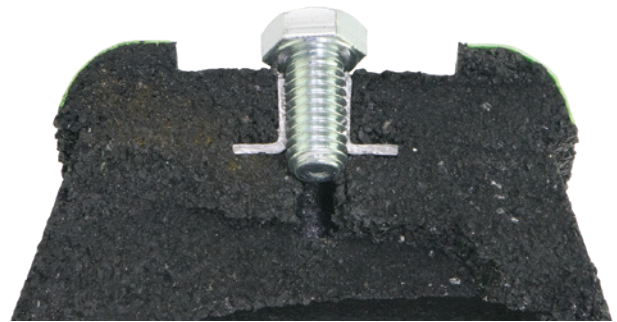
## 75% Faster Strut Install and Change-Out

### Built-in Channel Guide



**Straight Strut Installation**

### Embedded Fasteners



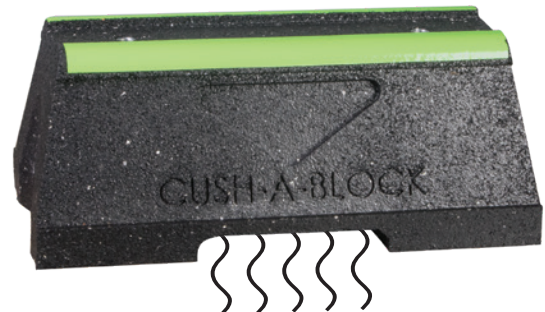
**Quick Strut Change-Out**

### Easy-carry Hand Grip



**Simple to Lift and Carry**

### Water Flow-through



**Helps Prevent Mold and Ice Dams**

- 100% Recycled Rubber Qualifies for LEED Credits
- Meets the Buy America Act and American Reinvestment Recovery Act
- Resistant to Freeze and Thaw
- Dampens Vibrations
- Compatible with Most Rooftop Materials
- Eco-Green Reflective Safety Strip Won't Peel or Flake

Call ZSi-Foster at (800) 323-7053 or order now at [zsi-foster.com](http://zsi-foster.com)

**ZSi-Foster**

Canton, MI | La Mirada, CA | Murfreesboro, TN | Ocala, FL | Springfield, MO | Totowa, NJ  
Effective October 23, 2020



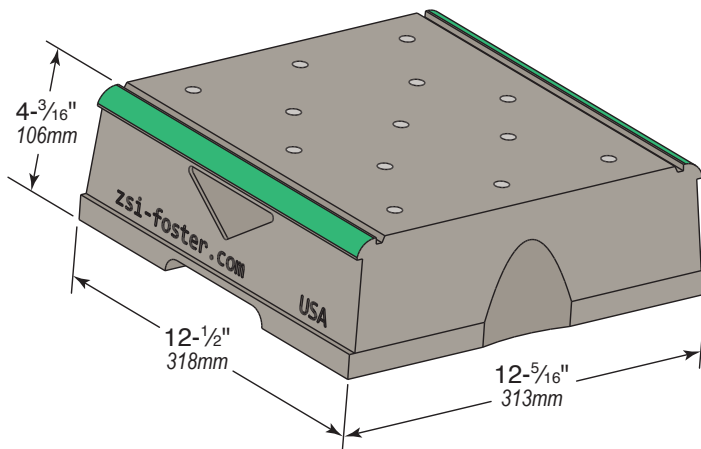
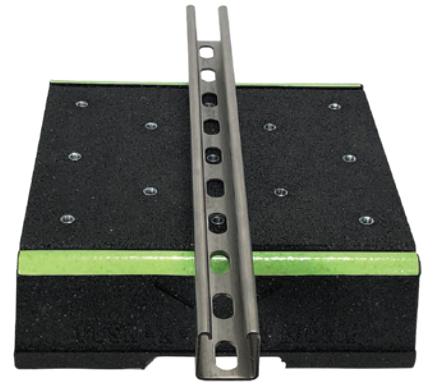


# Cush-A-Block® "Biggie"

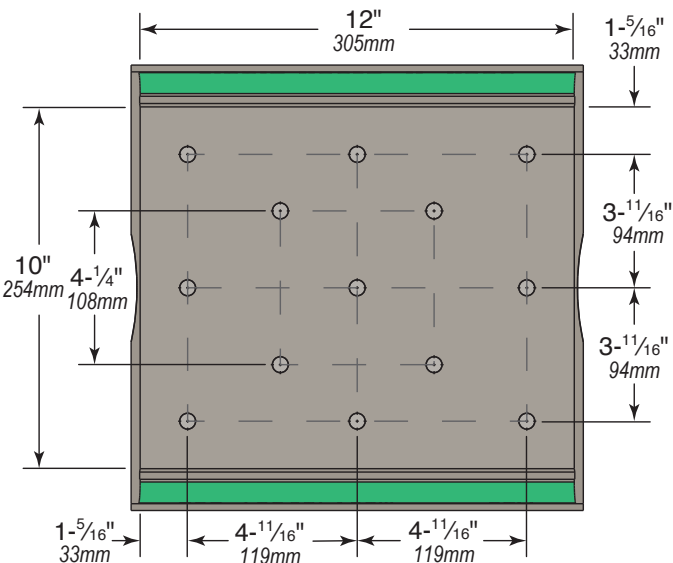
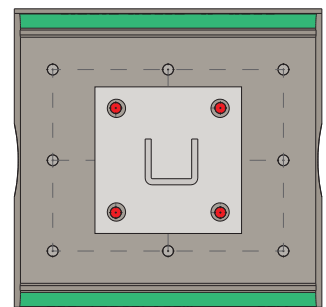
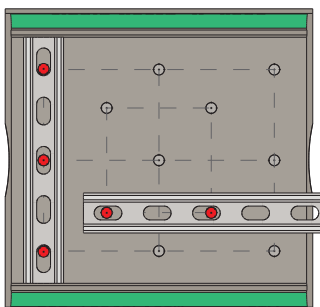
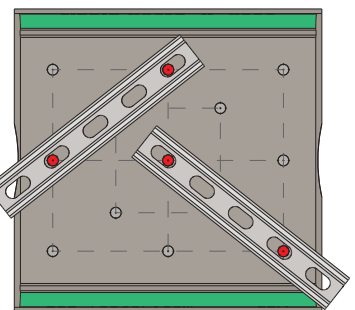
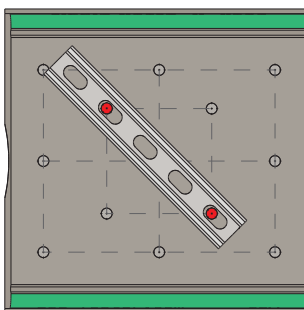
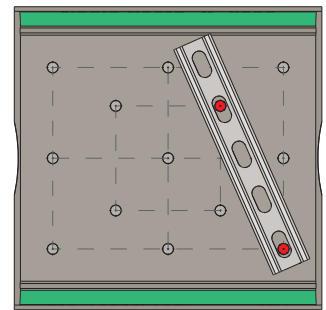
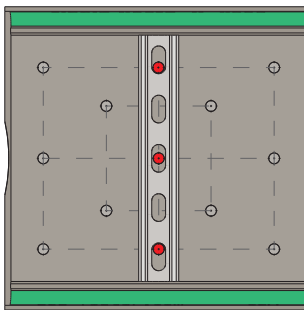
## Rooftop Supports

### CBB Series

Biggie Block



**Embedded Fastener Layout Provides an Amazing Variety of Channel or Fitting Options**



#### CBB-Base Series

Part No.	Weight Lbs (Kg)	Uniform Load Capacity Lbs (kN)*
<b>CBB</b>	16.5 (7.5Kg)	7,500 * (33.36 kN)

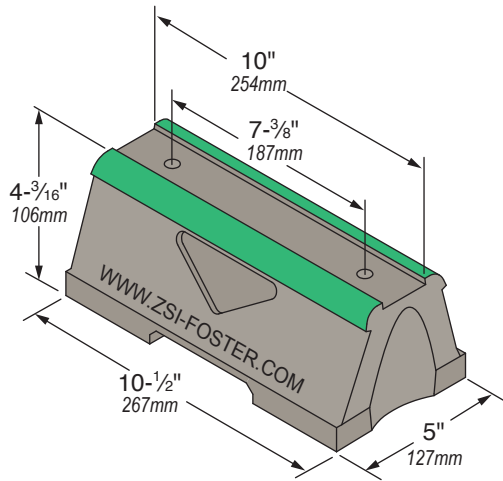
\* This load is only for the capacity of the components in this assembly. Please consult roofing manufacturer or engineer for roof load capacity.

# Cush-A-Block Rooftop Support System



## CBN Series

Plain Base



Note: The embedded fasteners are conveniently spaced to allow attachment of slotted channel.

The CBN-Base Rooftop Support is UV resistant and suitable for installation on most types of roofing material or other flat surfaces. Can be used as a curb (sleeper) replacement. Screw fasteners can be used to attach one or two hole pipe straps or a piece of strut (not included).

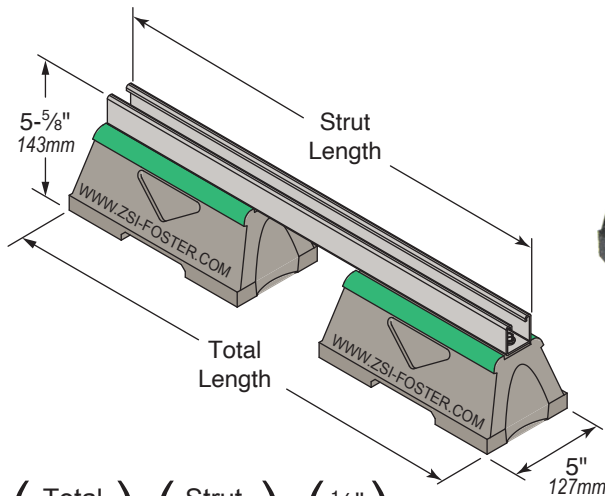
### CBN-Base Series

Part No.	Weight Lbs (Kg)	Uniform Load Capacity Lbs (kN)*
<b>CBN</b>	3.2 (1.4Kg)	2,500 * (11.12 kN)

\* This load is only for the capacity of the components in this assembly. Please consult roofing manufacturer or engineer for roof load capacity.

## CBN-BR Bridge Series

Support With Channel

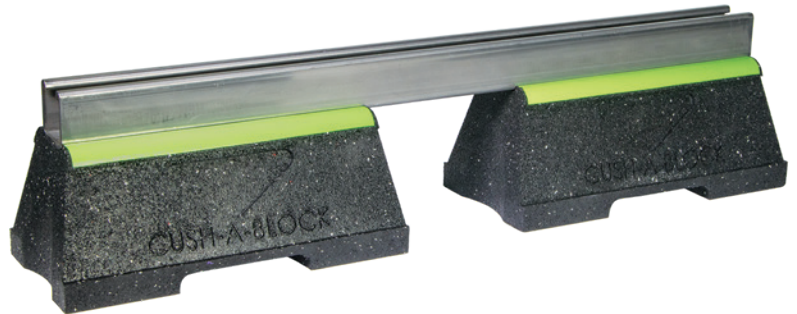


$$\left( \text{Total Length} \right) = \left( \text{Strut Length} \right) + \left( \frac{1}{2}'' \right) \left( 13\text{mm} \right)$$

Like all of the Cush-A-Block supports, the CBN-BR Bridge Rooftop Supports are perfect for supporting natural gas and refrigeration piping systems, cable tray, electrical conduit, multiple lines, HVAC equipment and many other applications.

The CBN-BR Series provides a longer mounting surface with strut lengths up to 60" (1.5m). Custom lengths are available upon request.

Standard strut mount pipe clamps are used to secure the pipes.



### CBN-BR Bridge Series Supports with 1-5/8" (41mm) Pre-Galv. or Hot Dip Galv. Steel Channel

Part No.	Strut Length	Total Length	Weight Lbs (Kg)	Uniform Load Capacity Lbs (kN)*
<b>CBN28BR</b>	28" (711mm)	28-1/2" (724mm)	10.8 (4.8Kg)	1,491* (6.63 kN)
<b>CBN36BR</b>	36" (914mm)	36-1/2" (927mm)	12.0 (5.4Kg)	1,160* (5.15 kN)
<b>CBN42BR</b>	42" (1m)	42-1/2" (1.08m)	12.9 (5.8Kg)	994* (4.42 kN)
<b>CBN50BR</b>	50" (1.2m)	50-1/2" (1.28m)	14.1 (6.4Kg)	835* (3.71 kN)
<b>CBN60BR</b>	60" (1.5m)	60-1/2" (1.54m)	15.6 (7.1Kg)	696* (3.09 kN)

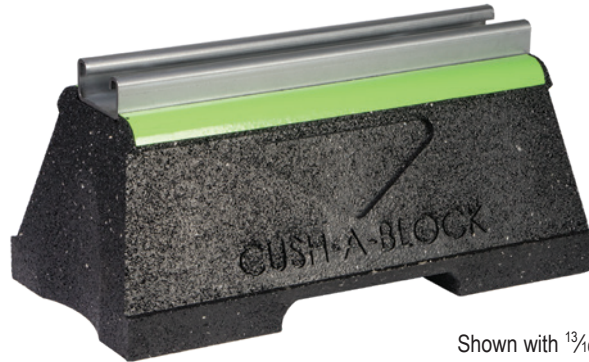
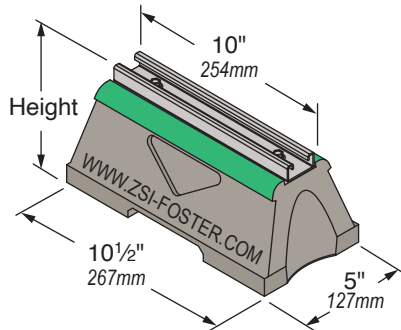
\* This load is only for the capacity of the components in this assembly. Please consult roofing manufacturer or engineer for roof load capacity.



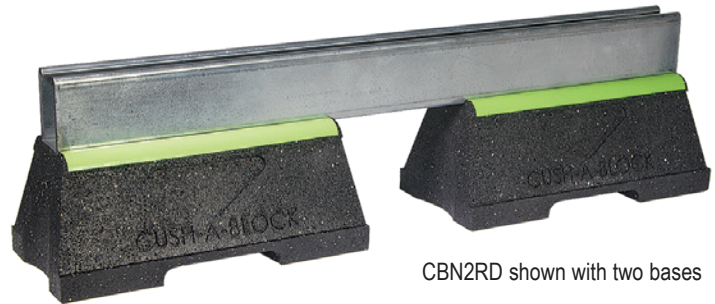
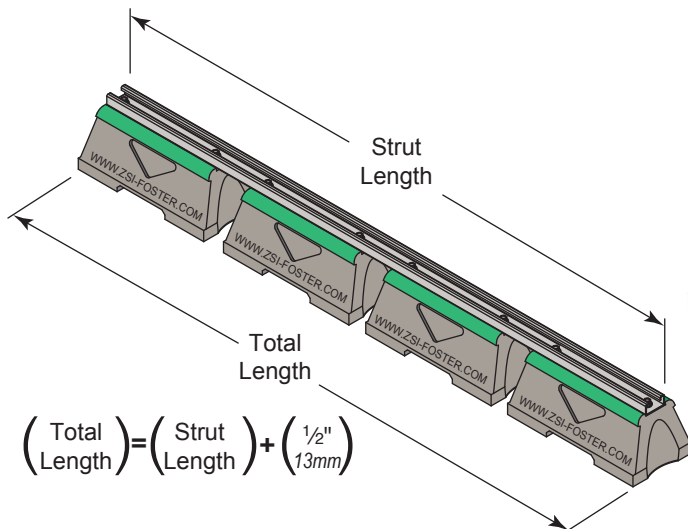
# Cush-A-Block Rooftop Support System

## CBN Series

Support With Metal Channel



Shown with  $\frac{13}{16}$ " Strut



CBN2RD shown with two bases

The CBN Series provides a longer mounting surface with strut lengths up to 46.82" (1.2m). Custom lengths are available upon request

Part No.	No. of Bases	Height	Strut Length	Total Length	Weight Lbs (Kg)	Uniform Load Lbs (kN)*
CBN-Support With $1^{13}/_{16}$ " (21mm) Pre-Galv. or Hot Dip Galv. Steel Channel						
CBN1S	1	$4\text{-}1^{13}/_{16}$ " (122mm)	10" (254mm)	10- $1/2$ " (267mm)	4.0 (1.8Kg)	2,500 * (11.12 kN)
CBN2S	2		23- $1/2$ " (597mm)	24" (610mm)	8.4 (3.8Kg)	5,000 * (22.24 kN)
CBN3S	3		35- $1/2$ " (902mm)	36" (914mm)	12.6 (5.7Kg)	7,500 * (33.36 kN)
CBN4S	4		47- $1/2$ " (1.2m)	48" (1.2m)	16.9 (7.6Kg)	10,000 * (44.48 kN)
CBN-Support With $1\text{-}5/8$ " (41mm) Pre-Galv. or Hot Dip Galv. Steel Channel						
CBN1D	1	$5\text{-}5/8$ " (143mm)	10" (254mm)	10- $1/2$ " (267mm)	4.7 (2.1Kg)	2,500 * (11.12 kN)
CBN2D	2		23- $1/2$ " (597mm)	24" (610mm)	9.9 (4.5Kg)	5,000 * (22.24 kN)
CBN3D	3		35- $1/2$ " (902mm)	36" (914mm)	15.0 (6.8Kg)	7,500 * (33.36 kN)
CBN4D	4		47- $1/2$ " (1.2m)	48" (1.2m)	20.0 (9.1Kg)	10,000 * (44.48 kN)
CBN Support With $2\text{-}7/16$ " (62mm) Pre-Galv. or Hot Dip Galv. Steel Channel						
CBN1RD	1	$6\text{-}7/16$ " (164mm)	10" (254mm)	10- $1/2$ " (267mm)	5.1 (2.3Kg)	2,500 * (11.12 kN)
CBN2RD	2		23- $1/2$ " (597mm)	24" (610mm)	10.9 (5.0Kg)	5,000 * (22.24 kN)
CBN3RD	3		35- $1/2$ " (902mm)	36" (914mm)	16.6 (7.5Kg)	7,500 * (33.36 kN)
CBN4RD	4		47- $1/2$ " (1.2m)	48" (1.2m)	22.2 (10.1Kg)	10,000 * (44.48 kN)
* This load is only for the capacity of the components in this assembly. Please consult roofing manufacturer or engineer for roof load capacity.						

# Cush-A-Block Rooftop Support System

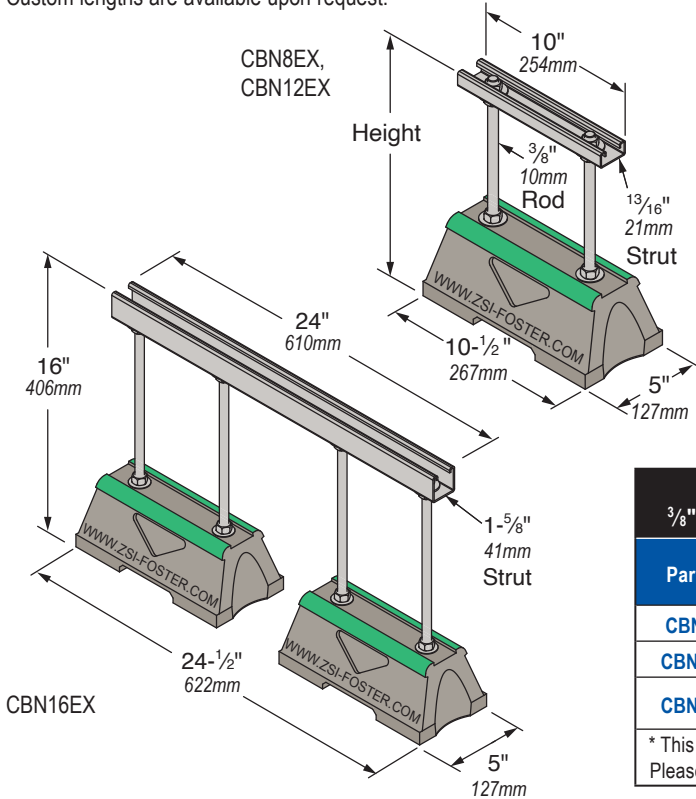


## CBN-EX Series

### Support With Raised Channel

CBN-BR Extension Rooftop Supports are perfect for supporting natural gas and refrigeration piping systems, cable tray, electrical conduit, multiple lines, HVAC equipment and many other applications.

Standard strut mount pipe clamps are used to secure the pipes.  
Custom lengths are available upon request.



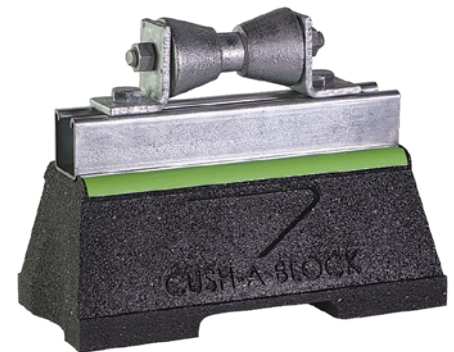
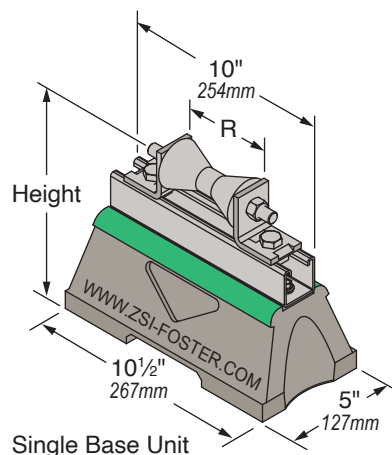
CBN-EX Extension Series Support with $\frac{3}{8}$ " Threaded Rod Extension and Pre-Galv. or Hot Dip Galv. Steel Channel				
Part No.	Height	Strut Size	Weight Lbs (Kg)	Uniform Load Lbs (kN) *
CBN8EX	8" (203mm)	$\frac{13}{16}$ " (21mm)	5.3 (2.4Kg)	1,000 * (4.44 kN)
CBN12EX	12" (305mm)	$\frac{13}{16}$ " (21mm)	5.7 (2.6Kg)	1,000 * (4.44 kN)
CBN16EX	16" (406mm)	$1\frac{5}{8}$ " (41mm)	12.7 (5.7Kg)	2,000 * (8.89 kN)

\* This load is only for the capacity of the components in this assembly. Please consult roofing manufacturer or engineer for roof load capacity.

## CBN-PRB Series

### Support With Pipe Roller

The CBN-PRB Rooftop Supports are designed for superior support of natural gas and refrigeration pipes. The roller allows for longitudinal movements of the pipe. This support is suitable for most types of roofing material or other flat surfaces.



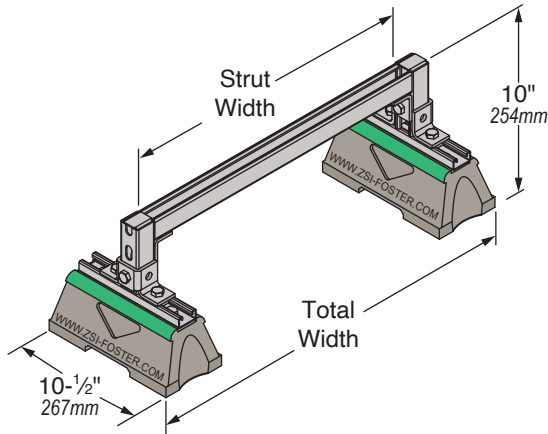
CBN-PRB Roller-Series With $1\frac{5}{8}$ " (41mm) Pre-Galv or Hot Dip Galv. Steel Channel with Rollers							
Part No.	R Pipe Size (O.D.)	Height	Height to Roller Center	Base Length	Strut Length	Weight Lbs (Kg)	Uniform Load Lbs (kN) *
CBN1PRB	1" to 2"	8" (203mm)	7" (178mm)	$10\frac{1}{2}$ " (1-Base)	10" (254mm)	7.5 (3.4Kg)	2,500 * (11.12 kN)
CBN2PRB	2" to 3- $\frac{1}{2}$ "						
CBN3PRB	4" to 6"	8- $\frac{1}{8}$ " (206mm)	8- $\frac{1}{4}$ " (210mm)	24" (2-Bases)	23- $\frac{1}{2}$ " (597mm)	18.1 (8.2Kg)	2,500 * (11.12 kN)
CBN4PRB	8" to 10"	10- $\frac{5}{16}$ " (262mm)					

\* This load is only for the capacity of the components in this assembly. Please consult roofing manufacturer or engineer for roof load capacity.

# Cush-A-Block Rooftop Support System

## CBN-RB Series

Support With Raised Bridge  
Medium Support



The CBN-RB Medium Rooftop Supports can support natural gas and refrigeration piping systems, cable tray, electrical conduit, multiple lines, HVAC equipment and many other applications. They are designed for rooftop applications requiring a heavier load bearing capacity, and are suitable for most types of roofing material or other flat surfaces. Custom lengths are available upon request.

Standard strut mount pipe clamps are used to secure the pipes.



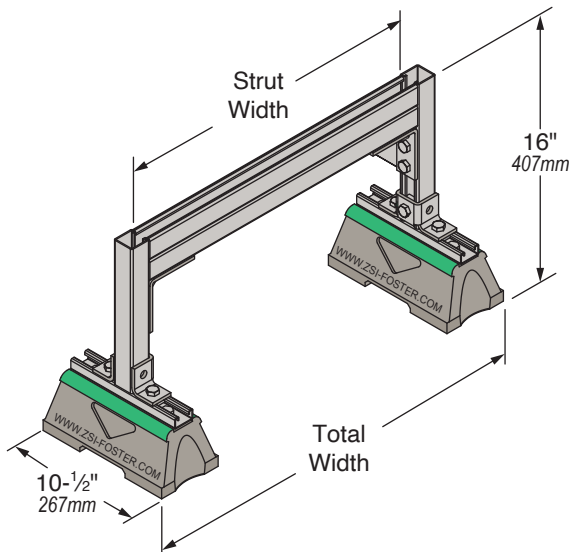
**Raised Bridge Medium Support with 2 CBN Bases & 1-5/8" (41mm) Pre-Galv or Hot Dip Galv. Steel Channel**

Part No.	Total Width	Strut Width	Weight Lbs (Kg)	Uniform Load Lbs (kN)*
<b>CBN1RB</b>	18.65" (474mm)	12" (305mm)	16.2 (7.3Kg)	3,000 * (13.34 kN)
<b>CBN2RB</b>	30.65" (779mm)	24" (610mm)	17.9 (8.1Kg)	1,500 * (6.67 kN)

\* This load is only for the capacity of the components in this assembly. Please consult roofing manufacturer or engineer for roof load capacity.

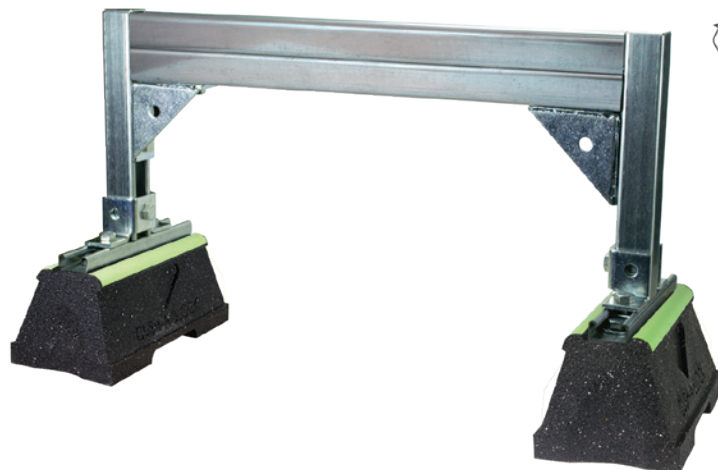
## CBN-RB Series

Support With Raised Channel  
Heavy Support



The CBN-RB Heavy Rooftop Supports is designed for rooftop applications requiring a heavier load bearing capacity. It is suitable for most types of roofing material or other flat surfaces. Custom lengths are available upon request.

Standard strut mount pipe clamps are used to secure the pipes.



**Raised Bridge Heavy Support with 2 CBN Bases & 3-1/4" (83mm) Back-to-Back Pre-Galv or Hot Dip Galv. Steel Channel**

Part No.	Total Width	Strut Width	Weight Lbs (Kg)	Uniform Load Lbs (kN)*
<b>CBN3RB</b>	30.65" (779mm)	24" (610mm)	27.4 (12.4Kg)	2,500†* (15.56 kN)
<b>CBN4RB</b>	42.65" (1.1m)	36" (914mm)	29.8 (13.5Kg)	2,500†* (14.45 kN)

\* This load is only for the capacity of the components in this assembly.

† Beam load is limited by weld shear

Please consult roofing manufacturer or engineer for roof load capacity.

# Cush-A-Block Rooftop Support System



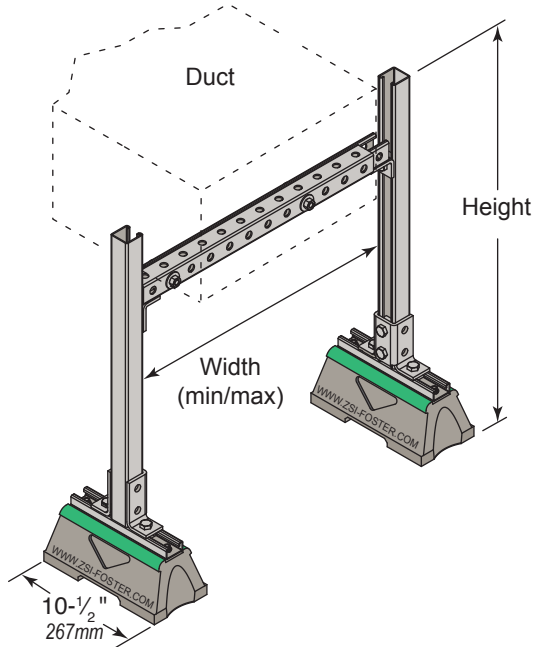
## CBN-DS Series

### Adjustable Width Duct Support

The CBN-DS Series is designed specifically for supporting duct work. The telescopic cross beam provides easy width and height adjustments.

A wide range of support widths are provided from 19-<sup>1</sup>/<sub>4</sub>" to 103-<sup>5</sup>/<sub>8</sub>" (489mm to 2.6m)

Standard strut mount pipe clamps are used to secure the pipes.



**CBN-DS Duct Support Series With Adjustable Width and Height  
with 1-<sup>5</sup>/<sub>8</sub>" (41mm) Pre-Galv or Hot Dip Galv. Steel Channel**

Part No.	Width		Height	Weight Lbs (Kg)	Uniform Load at Min. Width Lbs(kN) *
	Min.	Max.			
<b>CBN1DS</b>	19- <sup>1</sup> / <sub>4</sub> " (489mm)	26- <sup>3</sup> / <sub>4</sub> " (679mm)	28.813" (732mm)	26.4 (12Kg)	1,909 * (8.49 kN)
<b>CBN2DS</b>	24- <sup>7</sup> / <sub>8</sub> " (632mm)	39- <sup>7</sup> / <sub>8</sub> " (1m)		28.0 (12.7Kg)	1,477 * (6.57 kN)
<b>CBN3DS</b>	38" (987mm)	62- <sup>3</sup> / <sub>8</sub> " (1.6m)		31.7 (14.3Kg)	967 * (4.30 kN)
<b>CBN4DS</b>	62- <sup>3</sup> / <sub>8</sub> " (1.6m)	103- <sup>5</sup> / <sub>8</sub> " (2.6m)		38.5 (17.4Kg)	589 * (2.62 kN)
<b>CBN5DS</b>	19- <sup>1</sup> / <sub>4</sub> " (489mm)	26- <sup>3</sup> / <sub>4</sub> " (679mm)	36" (914mm)	26.4 (12Kg)	1,909 * (8.49 kN)
<b>CBN6DS</b>	24- <sup>7</sup> / <sub>8</sub> " (632mm)	39- <sup>7</sup> / <sub>8</sub> " (1m)		28.0 (12.7Kg)	1,477 * (6.57 kN)
<b>CBN7DS</b>	38" (987mm)	62- <sup>3</sup> / <sub>8</sub> " (1.6m)		31.7 (14.3Kg)	967 * (4.30 kN)
<b>CBN8DS</b>	62- <sup>3</sup> / <sub>8</sub> " (1.6m)	103- <sup>5</sup> / <sub>8</sub> " (2.6m)		38.5 (17.4Kg)	589 * (2.62 kN)

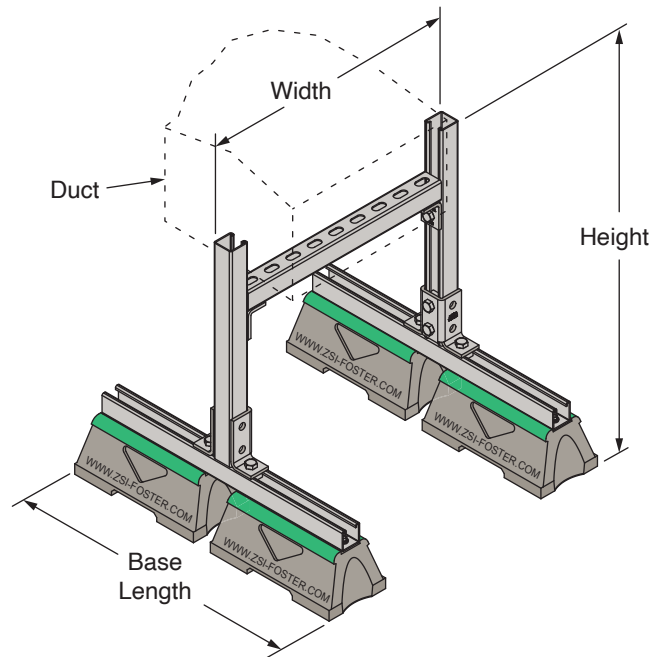
\* This load is only for the capacity of the components in this assembly.  
Please consult roofing manufacturer or engineer for roof load capacity.



# Cush-A-Block Rooftop Support System

## CBN-DSFW Series

Fixed Width Duct Support



The CBN-DSFW Series is designed specifically for supporting duct work. The cross beam provides easy size adjustments. Custom lengths are available upon request.

Standard strut mount pipe clamps are used to secure the pipes.

**CBN-DSFW Duct Support Series With Fixed Width & Adjustable Height  
with 1-5/8" (41mm) Pre-Galv or Hot Dip Galv. Steel Channel**

Model No.	Height	Width	Base Length	No. of Bases	Weight Lbs (Kg)	Uniform Load Capacity Lbs(kN) *
CBN1-DSFW	23" (584mm)	18" (457mm)	24" (610mm)	4	33.4 (15.1Kg)	2042 * (9.08 kN)
CBN2-DSFW		24" (610mm)			34.3 (15.6Kg)	1531 * (6.81 kN)
CBN3-DSFW		36" (914mm)			35.9 (16.3Kg)	1021 * (4.54 kN)
CBN4-DSFW		48" (1.2m)			37.6 (17.1Kg)	766 * (3.40 kN)
CBN5-DSFW	29" (737mm)	18" (457mm)	24" (610mm)	4	35.2 (16Kg)	2042 * (9.08 kN)
CBN6-DSFW		24" (610mm)			36.0 (16.3Kg)	1531 * (6.81 kN)
CBN7-DSFW		36" (914mm)			37.7 (17.1Kg)	1021 * (4.54 kN)
CBN8-DSFW		48" (1.2m)			39.3 (17.8Kg)	766 * (3.40 kN)
CBN9-DSFW	41" (1m)	18" (457mm)	24" (610mm)	4	38.7 (17.6Kg)	2042 * (9.08 kN)
CBN10-DSFW		24" (610mm)			39.5 (17.9Kg)	1531 * (6.81 kN)
CBN11-DSFW		36" (914mm)			41.2 (18.7Kg)	1021 * (4.54 kN)
CBN12-DSFW		48" (1.2m)			42.8 (19.4Kg)	766 * (3.40 kN)
CBN13-DSFW	53" (1.3m)	18" (457mm)	36" (914mm)	6	55.8 (25.3Kg)	2042 * (9.08 kN)
CBN14-DSFW		24" (610mm)			56.7 (25.7Kg)	1531 * (6.81 kN)
CBN15-DSFW		36" (914mm)			58.3 (26.4Kg)	1021 * (4.54 kN)
CBN16-DSFW		48" (1.2m)			60.0 (27.2Kg)	766 * (3.40 kN)

\* This load is only for the capacity of the components in this assembly.  
Please consult roofing manufacturer or engineer for roof load capacity.



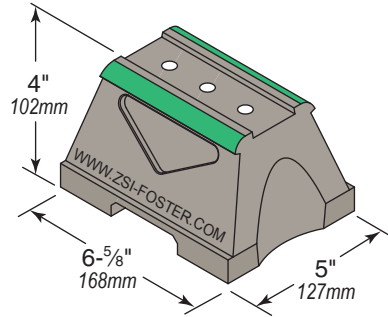
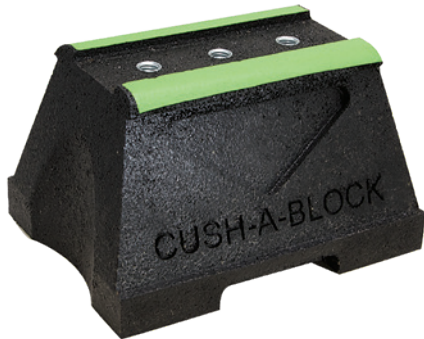
# Cush-A-Block<sup>®</sup>

## Mini Rooftop Supports



### CBM

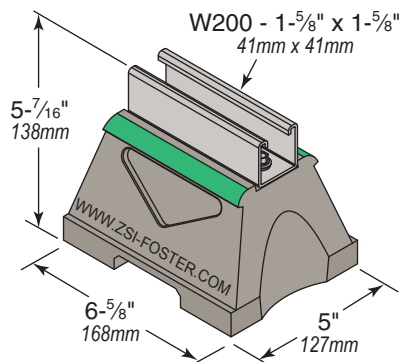
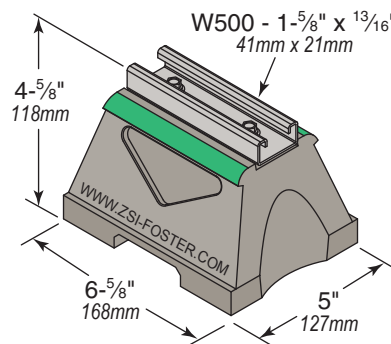
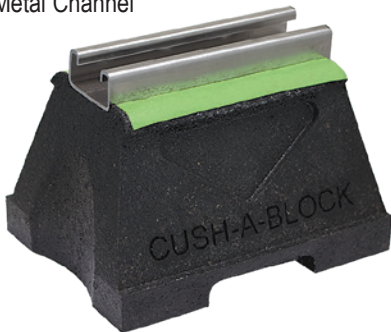
Cush-A-Block Mini



CBM-Base Series		
Part No.	Weight Lbs (Kg)	Uniform Load Lbs (Kg)*
<b>CBM</b>	1.0 (0.45 Kg)	400 (1.78 kN)
* This load is only for the capacity of the components in this assembly. Please consult roofing manufacturer or engineer for roof load capacity.		

### CBM Series

Support With Metal Channel



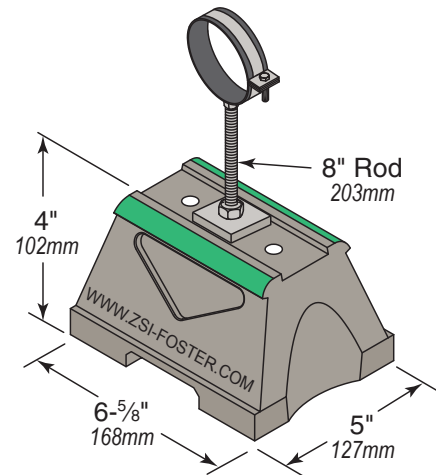
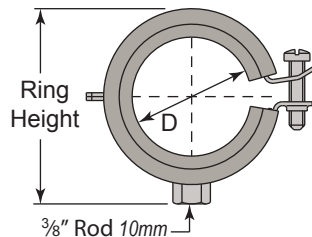
Part No.	Weight Lbs (Kg)	Uniform Load Lbs (Kg) *
<b>CBM-Support With <sup>13</sup>/<sub>16</sub>" (21mm) Pre-Galv or Hot Dip Galv. Steel Channel</b>		
<b>CBM1S</b>	2.11 (0.96Kg)	400 (1.78 kN)
<b>CBM-Support With 1-5/8" (41mm) Pre-Galv or Hot Dip Galv. Steel Channel</b>		
<b>CBM1D</b>	2.14 (0.97Kg)	400 (1.78 kN)
* This load is only for the capacity of the components in this assembly. Please consult roofing manufacturer or engineer for roof load capacity.		

# Cush-A-Block®

## Mini Rooftop Supports

### CBMPH Series

Support With Raised SPH Cush-A-Ring Clamp for Copper Tube or Steel Tube or Pipe



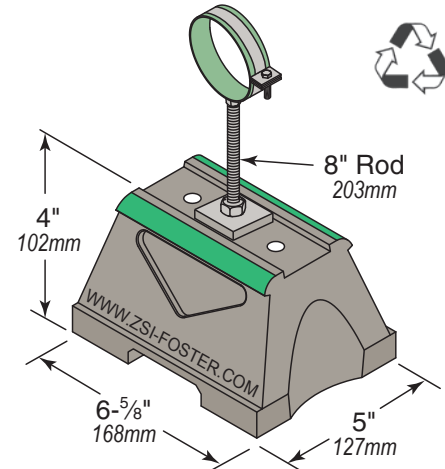
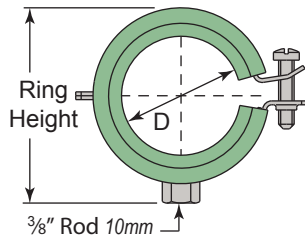
CBMPH Series Cush-A-Block Mini with Raised SPH Cush-A-Ring Clamp for Copper or Steel Tube or Pipe						
Part No.	D	IP	CT	Ring Height	Weight Lbs (Kg)	Uniform Load Lbs (kN) *
CBMPH1	0.433" - 0.551" (11 - 14mm)	1¼"	3⁄8"	1.4" (36mm)	2.31 (1.05Kg)	125 (0.56 kN)
CBMPH2	0.591" - 0.709" (15 - 18mm)	3⁄8"	1⁄2"	1.4" (36mm)	2.31 (1.05Kg)	
CBMPH3	0.787" - 0.906" (20 - 23mm)	1⁄2"	3⁄4"	1.6" (41mm)	2.33 (1.06Kg)	
CBMPH4	0.984" - 1.102" (25 - 28mm)	3⁄4"	1"	1.8" (46mm)	2.35 (1.07Kg)	
CBMPH5	1.22" - 1.378" (31 - 35mm)	1"	1¼"	2.0" (51mm)	2.37 (1.08Kg)	
CBMPH6	1.575" - 1.693" (40 - 43mm)	1¼"	1½"	2.4" (61mm)	2.41 (1.09Kg)	
CBMPH7	1.89" - 2.087" (48 - 53mm)	1½"	-	2.6" (66mm)	2.41 (1.09Kg)	
CBMPH8	2.126" - 2.205" (54 - 56mm)	-	2"	2.8" (71mm)	2.41 (1.09Kg)	
CBMPH9	2.244" - 2.48" (57 - 63mm)	2"	-	3.1" (79mm)	2.50 (1.13Kg)	
CBMPH10	2.52" - 2.756" (64 - 70mm)	-	2½"	3.9" (99mm)	2.54 (1.15Kg)	
Below parts have 2 bolt configuration SPH Clamps						
CBMPH11	2.874" - 3.15" (73 - 80mm)	2½"	3"	4.3" (109 mm)	2.58 (1.17Kg)	125 (0.56 kN)
CBMPH12	3.268" - 3.583" (83 - 91mm)	3"	-	4.8" (122 mm)	2.94 (1.33Kg)	
CBMPH13	3.937" - 4.134" (100 - 105 mm)	-	4"	5.3" (135 mm)	3.19 (1.45Kg)	
CBMPH14	4.252" - 4.488" (108 - 114mm)	4"	-	5.7" (145 mm)	3.19 (1.45Kg)	
* This load is only for the capacity of the components in this assembly. Please consult roofing manufacturer or engineer for roof load capacity.						

See Engineering Catalog for more information on the SPH Cush-A-Ring Clamps

## Mini Rooftop Supports

### CBMPP Series

Support With Raised SPP Cush-A-Ring  
Clamp for PEX, CPVC, or PVC Pipe



CBMPP Series Cush-A-Block Mini with Raised SPP Cush-A-Ring Clamp for PEX, CPVC or PVC Pipe

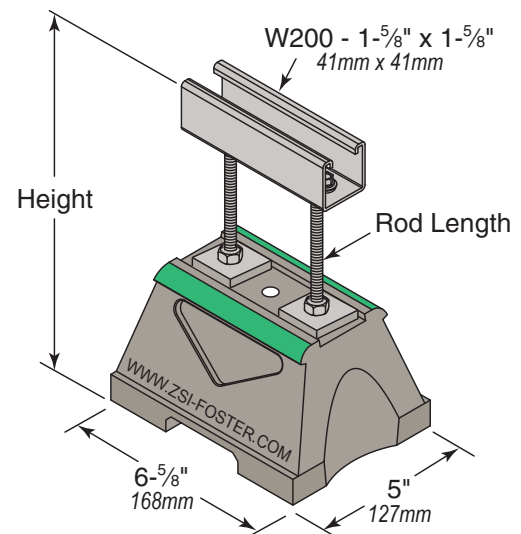
Part No.	D (mm)	PVC / CPVC	PEX	Ring Height	Weight (Lbs)	Load Capacity (Lbs) *
CBMPP2	0.591" - 0.709" (15 - 18mm)	3⁄8"	1⁄2"	1.4" (36mm)	2.31 (1.05Kg)	125 (0.56 kN)
CBMPP3	0.787" - 0.906" (20 - 23mm)	1⁄2"	3⁄4"	1.7" (43mm)	2.33 (1.06Kg)	
CBMPP4	0.984" - 1.102" (25 - 28mm)	3⁄4"	1"	1.9" (48mm)	2.33 (1.06Kg)	
CBMPP5	1.22" - 1.378" (31 - 35mm)	1"	1¼"	2.2" (56mm)	2.36 (1.07Kg)	
CBMPP6	1.575" - 1.693" (40 - 43mm)	1¼"	1½"	2.6" (66mm)	2.40 (1.09Kg)	
CBMPP7	1.89" - 2.087" (48 - 53mm)	1½"	-	3.0" (76mm)	2.41 (1.09Kg)	
CBMPP8	2.126" - 2.205" (54 - 56mm)	-	2"	3.0" (76mm)	2.50 (1.13Kg)	
CBMPP9	2.362" - 2.559" (60 - 65mm)	2"	-	3.4" (86mm)	2.50 (1.13Kg)	
CBMPP10	2.756" - 2.992" (70 - 76mm)	2½"	-	4.1" (104mm)	2.54 (1.15Kg)	
Below parts have 2 bolt configuration SPP Clamps						
CBMPP11	3.386" - 3.583" (86 - 91mm)	3"	-	4.6" (117mm)	2.94 (1.33Kg)	125 (0.56 kN)
CBMPP12	4.331" - 4.488" (110 - 114mm)	4"	-	5.8" (147mm)	3.19 (1.45Kg)	
* This load is only for the capacity of the components in this assembly. Please consult roofing manufacturer or engineer for roof load capacity.						

\* This load is only for the capacity of the components in this assembly. Please consult roofing manufacturer or engineer for roof load capacity.

See Engineering Catalog for more information on the SPP Cush-A-Ring Clamps

### CBM REX Series

Support With Raised 1-5/8" Metal Channel



CBM-Support Extension with 3/8" Threaded Rod Extension  
& 1-5/8" (41mm) Pre-Galv or Hot Dip Galv. Steel Channel

Part No.	Height	Rod Length	Weight Lbs (Kg)	Uniform Load Lbs (kN) *
CBM10REX	10" (254mm)	6" (152mm)	2.11 (0.96Kg)	175 (0.78 kN)
CBM12REX	12" (305mm)	8" (203mm)	2.14 (0.97Kg)	175 (0.78 kN)

\* This load is only for the capacity of the components in this assembly. Please consult roofing manufacturer or engineer for roof load capacity.

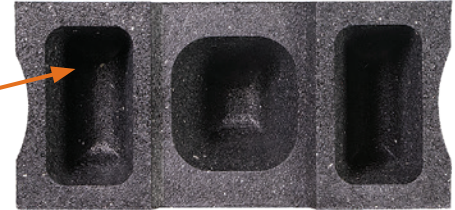


# Cush-A-Block Rooftop Support System

## HVAC | Pipe & Conduit | Solar Racking | Rooftop Walkways

The channel for Cush-A-Block support assemblies includes a variety of options. The strut can be made in special lengths, finishes, and alloys including Aluminum, Stainless Steel both 304 & 316, PVC coated, Powder coated, Zinc Trivalent Chromium, Pre-Galvanized and Hot Dipped Galvanized.

Embedded nut eliminates any thru holes and prevents leaks or any rust from forming on the underside of the fastener.



### Your Single Source for All Products Shown.

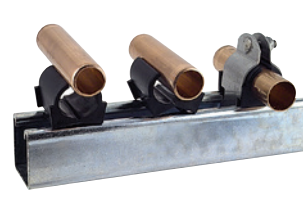
CUSH-A-CLAW™



CUSH-A-GRIP



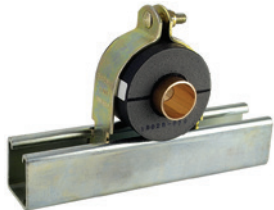
CUSH-A-CLAMP®



CUSH-A-NATOR®



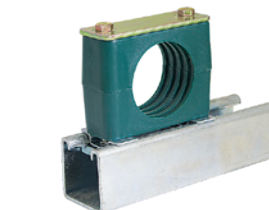
CUSH-A-THERM™



SNAP-A-SADDLE PRO™



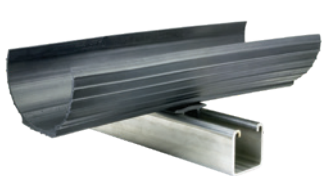
BETA CLAMPS™



CAL-CLAMP



SNAP-A-SADDLE™



CUSH-A-CLIP™



METAL FRAMING



Call ZSi-Foster at (800) 323-7053 or order now at [zsi-foster.com](http://zsi-foster.com)



**ZSi-Foster**

Canton, MI | La Mirada, CA | Murfreesboro, TN | Ocala, FL | Springfield, MO | Totowa, NJ

© Copyright 2020 ZSi-Foster / Printed & Designed in the USA / 10.20 R2

